

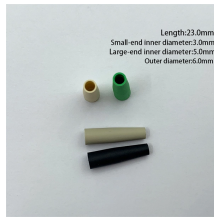
# **Development Space for Power Supply Bureau Relay Protection**



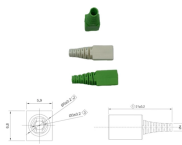
## Development Space for Power Supply Bureau Relay Protection



At the first site visit, Protection and Control Engineering (P& C engineers, designers, and/or supervisors), Substation Operations (operation manager or supervisor) and Field Engineering (relay testing, ...



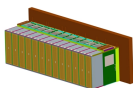
Suitable for beginners and experienced engineers alike, the book is written for those who work with relay protection systems and with AC and DC auxiliary power systems in power plants and substations.



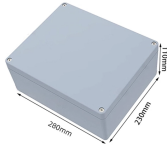
Scope Concepts of power bus protection are discussed in this guide. Consideration is given to availability and location of breakers, current sensing devices, and disconnect switches, as well as ...



The recommendations and guidelines in this document are based on the experience and judgment of WECC members and include criteria for developing protection system best practices that, when ...



The physical placement of the protection relays and auxiliary relays in the panels is crucial when utilizing sub-divided systems. It is recommended to employ distinct panels for the protection ...



As the protected components of the electrical systems have changed in size, configuration and their critical roles in the power system supply, some protection aspects need to be revisited (i.e. the use of ...



For the purpose of this guideline, we define the protection system to include the entire protective relay system including all relay inputs and their sources, the protective relay or relays themselves, and the ...



PRS engineers are experts at applying and setting microprocessor-based protective relays for electric power generation, transmission lines, substations, distribution networks, and industrial power systems.



Technical resources and thought leadership for protection and control P& C relays for transmission, transformer, distribution feeders, bus, motors, generators, IEC 61850 process bus and digital meters.



This paper introduces the concept of relay protection of hidden faults, its characteristics, and then analyzes the detection, risk and the calculation method of the relay protection of...



Check that sufficient space is available. To allow access for maintenance and future modifications, sufficient space is needed at the front and rear of the IED. Flush mounted IEDs should be possible to ...



Electronic power amplifiers are applied to supply precise voltages and currents of high stability to the protection relay under test. The inclusion of a computer in the test system allows more ...

## Contact Us

For more information, pricing, or custom network solutions, please contact us:

Website: <https://hashherbcafe.co.za>

Email: [hello@hashherbcafe.co.za](mailto:hello@hashherbcafe.co.za)

Phone: +27 63 814 7295

Address: 15 Galaxy Road, Linbro Business Park, Johannesburg, 2065, South Africa

This document is for informational purposes only. Specifications subject to change without notice.

