

## Dedicated optical cable terminal box model



## Dedicated optical cable terminal box model



FS provides Fiber Terminal Box, free & fast delivery, expert tech support, outstanding warranties.



Precision Group Optical Network Terminal (ONT) Line: Smarter Features, Faster Installs Precision Group's Optical Network Terminals are engineered to safeguard both the ONT and fiber, serving as a ...



Discover how to select the best fiber optic terminal box for data centers, campus fiber backbones, outdoor FTTH networks, and enterprise fiber systems. Learn how environment, capacity, ...



Discover CRXCONEC's extensive range of structured cabling products, including Cat.8 to Cat.5E cables, keystone jacks, and patch cords. Specializing in both ...

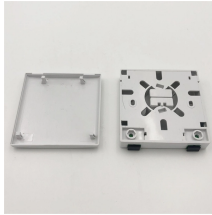


OTRANS strives to provide you with professional, reliable and comprehensive wall-mounted fiber optic terminal boxes. Material: High-quality ABS+PC plastic, ensuring high strength and resistance to UV ...

Waterproof and dustproof, reliable and safe  
The outer classic sink design allows the sealing ring of the cabinet and door to be seamlessly compressed without leaving a trace of gaps



Discover CRXCONEC's extensive range of structured cabling products, including Cat.8 to Cat.5E cables, keystone jacks, and patch cords. Specializing in both copper and fiber solutions, our products ...



As a professional fiber optical terminal box manufacturer, UnitekFiber provides fiber terminal boxes with various waterproof levels, up to IP68; and provides a variety ...



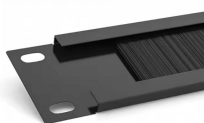
GAO's box includes features such as cable management, splicing trays, and connector adapters. Our boxes ensure reliable and efficient fiber optic connectivity by offering a centralized and organized ...



As a professional fiber optical terminal box manufacturer, UnitekFiber provides fiber terminal boxes with various waterproof levels, up to IP68; and provides a variety of options from 2 ports to 48 ports.



The Rack Mounted Optical Cable Terminal Box is a metal enclosure used for fiber cable management in rack systems. It enables fiber splicing, termination, and patching in a single compact unit. With ...



This 16-core FTTH access terminal box supports LGX splitters, SC adapter panels, and fiber splicing, delivering efficient NAP distribution for FTTx networks.

## Contact Us

For more information, pricing, or custom network solutions, please contact us:

Website: <https://hashherbcafe.co.za>

Email: [hello@hashherbcafe.co.za](mailto:hello@hashherbcafe.co.za)

Phone: +27 63 814 7295

Address: 15 Galaxy Road, Linbro Business Park, Johannesburg, 2065, South Africa

This document is for informational purposes only. Specifications subject to change without notice.

