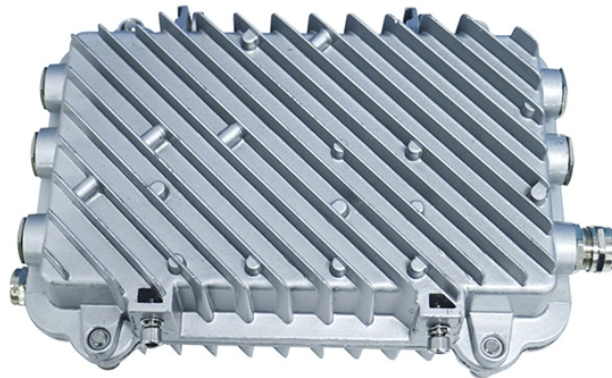


Data Center Communication Power System Diagram



Data Center Communication Power System Diagram



Since the requirements for the equipment of data centres as well as the expectations with regard to system safety and documentation are constantly increasing, the planning of electric power ...



Data centers rely on single-phase and three-phase power systems for distribution. Single-phase power, a simpler form of AC, suits smaller setups but is inefficient for large-scale centers. ...



This review surveys recent advances in data centers' energy consumption modeling, forecasting methodologies, and cooling system innovations, before examining renewable power developments ...



The main objective is to support data center electrical distribution designers by providing an example of a fully designed low voltage power distribution for a data center along with its main components



What Is a Data Center Single Line Diagram (SLD)?
A Single Line Diagram is a simplified representation of a three-phase electrical system using single-line symbols to illustrate: It ...



In this article, I'll examine and describe some of the best practices for designing supply and processor rail-monitoring solutions in enterprise applications. Enterprise computing relies upon a complex ...



Figure 1 provides a block diagram of an electrical distribution system showing the name and the typical location of the electrical distribution equipment in a data center and the power flow path.



This guide explores these key components, their functions, placement, and relevant standards in data center electrical design, providing a deeper understanding of how power is ...



By following these steps, you can effectively interpret a data center power system diagram and use it to manage and maintain the power infrastructure of your data center.

Contact Us

For more information, pricing, or custom network solutions, please contact us:

Website: <https://hashherbcafe.co.za>

Email: hello@hashherbcafe.co.za

Phone: +27 63 814 7295

Address: 15 Galaxy Road, Linbro Business Park, Johannesburg, 2065, South Africa

This document is for informational purposes only. Specifications subject to change without notice.

