

Customization Process of Anti-Calibrating Optical Cable OM5 for Base Stations

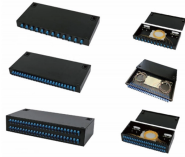


Overview

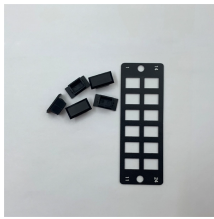
Whether you are a seasoned IT Architect or a curious newcomer to the realm of fiber optics, this article aims to navigate you through OM1 vs OM2 vs OM3 vs OM4 vs OM5 multimode fiber types covering speed, transmission distances, typical applications, a detailed technical. Whether you are a seasoned IT Architect or a curious newcomer to the realm of fiber optics, this article aims to navigate you through OM1 vs OM2 vs OM3 vs OM4 vs OM5 multimode fiber types covering speed, transmission distances, typical applications, a detailed technical. With advanced production lines, strict quality management, and rich experience in fiber optic connectivity, we provide complete OEM (Original Equipment Manufacturing), ODM (Original Design Manufacturing), and custom cable assembly services for global clients. From concept to cable — Fibermania Link. The OM5 Multimode Duplex Fiber Optic Patch Cable from Fiber-Life is engineered for next-generation high-speed data transmission and offers full customization to meet diverse networking requirements. Unlike traditional OM3 and OM4 cables, OM5 wideband multimode fiber (WBMMF) is

optimized for. Vertiv's pre-terminated fiber optic cable is a high-density fiber optic connector MPO/MTP and fiber optic cable factory terminated, test field plug-and-play, supporting rapid deployment in user data centers. OM5 multimode 50/25 fiber cable assemblies, including LC, SC, ST, FC, E-2000, MPO, MTP connectors, from simplex, duplex to multi core break out cables. custom made OM5 cables with different length, cable jacket, connector types.

Customization Process of Anti-Calibrating Optical Cable OM5 for Bas



Introducing the entire process of customizing fiber optic products for our international customers, along with a step-by-step flowchart illustrating how it works.



Customers can freely customize LC/SC/FC/ST connectors, cable length, outer diameter, and jacket material (PVC, LSZH, OFNP, etc.), ensuring complete adaptability for unique deployment environments.



OM5 can be a more user-friendly solution, with simplified cable installation, troubleshooting, cleaning and overall maintenance. The duplex connector allows installers and engineers to adjust polarity in ...



We offer full customization for SM (single-mode), MM (multi-mode), and hybrid fiber cables. Our assemblies support 850nm, 1310nm, and 1550nm transmission, with precise core alignment and ...



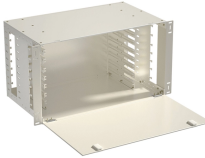
ISO/IEC 11801 defines the OM1, OM2, OM3, OM4, and OM5 types of multimode fiber. It also lists the key technical requirements for each type. In the two tables above, we've summarized ...



We have custom made OM5 cables for FTTH, armored OM5 cables, multi-core OM5 cables, outdoor OM5 cables, Indoor OM5 cables. We have a team of experienced staff. Most of our staff have over ...



ClearCurve OM2, OM3, OM4, and OM5 wide band fibers are compliant with IEC 60793-2-10. The multimode fiber withstands tight bends and challenging cabling routes in data center and in-building ...



OM5 deployments often require support from a custom cable manufacturer to ensure proper design, testing, and compatibility. Key differences between OM fiber optic patch cable types include: ...



The production process of its fiber preform has been optimized to support higher bandwidth applications, while maintaining full backward compatibility with traditional OM3 and OM4 ...



Vertiv's pre-terminated fiber optic cables are factory terminated and tested to greatly improve system performance and cabling quality. The modular design allows for quick connection of system ...

Contact Us

For more information, pricing, or custom network solutions, please contact us:

Website: <https://hashherbcafe.co.za>

Email: hello@hashherbcafe.co.za

Phone: +27 63 814 7295

Address: 15 Galaxy Road, Linbro Business Park, Johannesburg, 2065, South Africa

This document is for informational purposes only. Specifications subject to change without notice.

