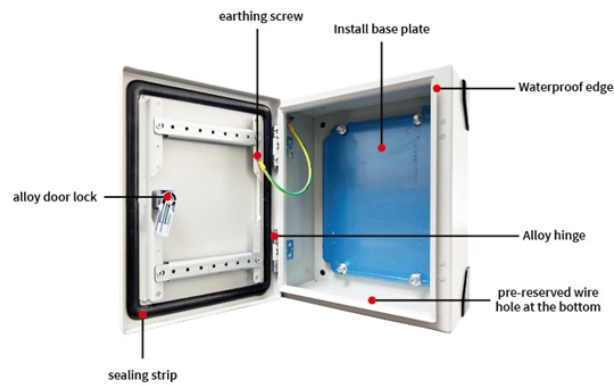


Cuban cable tray material accessories



Overview

Choose from our selection of cable tray accessories, including cable and hose trays, steel formable cable and hose trays, and more. In stock and ready to ship.



Cuban cable tray material accessories



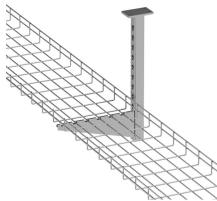
Looking for Cable Trays and Accessories? Imperial Supplies has a large selection on hand, at incredible prices. Shop now to stock up and save.



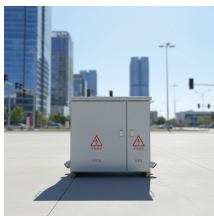
As the leading cable tray manufacturers and suppliers, JLH Electric offers a wide range of accessories and spare items, including tray supports and tray connections. We can provide custom design and ...



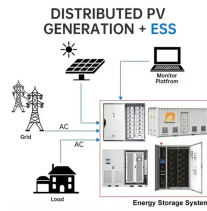
Cable Tray Splicer, Washer Kit, Material: Carbon Steel, Finish: Electroplated Zinc, Package of 50



2 inch x 8 inch x 10 foot section of wiremesh cable tray constructed of precision engineered high quality welded steel wire and can be adapted to fit any installation on-site Electro-Zinc finish is perfect for ...



Discover the perfect cuba installs cable trays for your next adventure, with options hand-picked to match your specifications.



Barriers are provided in 10 ft. lengths and supplied for field installation using 3/16" SS rivets (ref. part # TPDR) or use of an adjustable clamp ref. part # XXX (for 3, 4, 6 and 8" deep ladder tray).



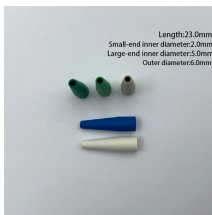
Cable Tray ABW4SB-3 Barrier Strip, 3 m L x 4 in H, For Use With Aluminum Cable T...



Explore XMQJ cable tray systems for industrial cable routing. Compare solid, perforated and ladder trays, choose materials & finishes, and match fittings plus accessories for complete installations. ...



Selecting the right cable tray accessories is crucial for the safety, stability, and ease of maintenance of any electrical system. This article provides a comprehensive guide on the different ...



Choose from our selection of cable tray accessories, including cable and hose trays, steel formable cable and hose trays, and more. Same and Next Day Delivery.

Contact Us

For more information, pricing, or custom network solutions, please contact us:

Website: <https://hashherbcafe.co.za>

Email: hello@hashherbcafe.co.za

Phone: +27 63 814 7295

Address: 15 Galaxy Road, Linbro Business Park, Johannesburg, 2065, South Africa

This document is for informational purposes only. Specifications subject to change without notice.

