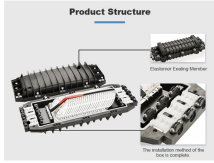




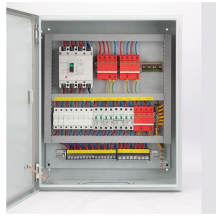


Costa Rica Distribution Box Explosion-proof Specifications Table



Costa Rica Distribution Box Explosion-proof Specifications Table

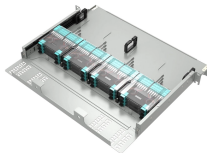
	<p>Atex control stations, explosion protected control units and distribution boxes made stainless steel maritime grade AISI 316L or AISI 304L. Atex Delvalle provides a custom build facility for Hazardous ...</p>
	<p>Contact our experts or request a quote today. Main switch: Maximum current is 180A. Branch circuit: Maximum current is 100A.</p>
	<p>Equipped with specialized hinge structure, which can prevent the flameproof joints from damage when opening and closing the panels, and greatly prolong the service life of box. The boxes can be ...</p>
	<p>Durable Hexlon Explosion Proof Distribution Boxes and Electrical Enclosures, IECEx and ATEX certified for Zone 1 and Zone 2.</p>
	<p>Flameproof and explosion proof, these power overhaul distribution boxes are suitable for use in hazardous areas. Main switch: Maximum current is 180A. Branch ...</p>



These explosion proof junction boxes / terminal boxes, plugs, sockets & connectors are for use in explosive atmospheres in compliance with the ATEX 94/9/EC Directive and IEC.



The document provides specifications for the BXM (D)51 Series Explosion-proof Illumination and Power Distribution Boxes, designed for use in hazardous environments (Zones 1, 2, 21, and 22).



The boxes can be combined and installed freely to save space and meet the requirements of various distribution systems. Client requirements incorporated on request.



CZ Electric Co., Ltd was established in 1990, is a CZ1290 Explosion-proof distribution boxes suppliers, and is headquartered in Jiaxing City, Zhejiang Province, CZ can provide users with comprehensive ...



Explosion proof junction boxes with detachable covers which are secured to the body by high tensile screws. Available in five sizes, these boxes provide a wide range of termination and distribution ...



Safely conduct, connect and distribute energy in hazardous areas with R. STAHL's terminal boxes. We offer bespoke, custom-made terminal boxes and terminal box combinations, as well as standard ...



Ex d and Ex tb certified for installation in explosion-hazardous areas. Suitable for use in gas group IIB+H 2 environments. Customizable configuration of operators, cable entry quantities and cable gland ...



Explosion-proof lighting distribution boxes and cabinets come in a variety of models. They vary in terms of materials, including metal and flame-retardant plastic; installation methods, such as ...

Contact Us

For more information, pricing, or custom network solutions, please contact us:

Website: <https://hashherbcafe.co.za>

Email: hello@hashherbcafe.co.za

Phone: +27 63 814 7295

Address: 15 Galaxy Road, Linbro Business Park, Johannesburg, 2065, South Africa

This document is for informational purposes only. Specifications subject to change without notice.

