

## Corrosion-resistant and moisture-proof cable trays



## Corrosion-resistant and moisture-proof cable trays



Are you struggling with cable management systems that corrode, require constant maintenance, or pose electrical hazards in aggressive environments? Our corrosion-resistant Fiberglass Reinforced Plastic ...



Discover the essentials of corrosion-resistant cable trays, including load capacity, customization options, and industry applications.



Discover the best practices for cable tray corrosion protection, including load capacity, materials, and customized solutions for various applications.



These cable trays are resistant to corrosion and can endure exposure to moisture, steam, and food-grade chemicals, making them ideal for cable management in food processing plants.



Choose from our selection of cable trays, including over 850 products in a wide range of styles and sizes. Same and Next Day Delivery.



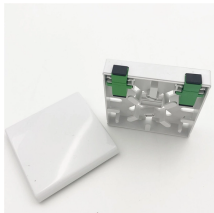
This comprehensive guide explores the best materials for cable trays in corrosive environments, analyzing options like HDG steel, stainless steel, aluminum alloy, and FRP.



When fitting cable trays and their accessories, the products are cut on site to create changes of direction, adjust sections, etc. Damage can also occur during handling; as a result, both the ...



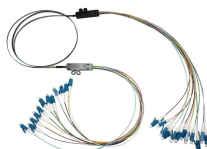
These cable trays are resistant to corrosion and can endure exposure to moisture, ...



Discover durable and lightweight GRP Cable Trays from Bonn Group – ideal for corrosive, outdoor, and industrial environments.



Outdoor cable tray and raceway systems are engineered to provide reliable cable management in harsh, exposed environments.



Discover durable and lightweight GRP Cable Trays from Bonn Group – ideal for corrosive, outdoor, and industrial environments.



Learn how to choose the best anti-corrosive cable trays for your electrical system. Discover the ideal materials for mild, moderate, and severe corrosion environments to ensure long ...

## Contact Us

For more information, pricing, or custom network solutions, please contact us:

Website: <https://hashherbcafe.co.za>

Email: [hello@hashherbcafe.co.za](mailto:hello@hashherbcafe.co.za)

Phone: +27 63 814 7295

Address: 15 Galaxy Road, Linbro Business Park, Johannesburg, 2065, South Africa

This document is for informational purposes only. Specifications subject to change without notice.

