

Configuring VLANs on Huawei Access Layer Switches



SC connector  X 12



Configuring VLANs on Huawei Access Layer Switches



Configuring inter VLAN routes on Huawei's layer-3 switches mainly includes creating VLANs, port division, layer-3 VLAN interface address configuration, static routing or rip protocol ...



In this Huawei VLAN Configuration lesson, you will learn how to configure Virtual LANs on Huawei switches. After this lesson, you will be familiar with VLAN commands of Huawei...



Configuring a Huawei switch to assign an IP address to VLAN 1 and binding multiple ports to it can seem challenging, but this step-by-step guide simplifies the process.



Assign VLANs on Switch_1 and Switch_2, configure Switch_1 and Switch_2 to transparently transmit VLAN packets to the Layer 3 switch, and configure a VLANIF interface for each VLAN on the Layer 3 ...



MUX VLAN is configured on a Layer 2 switch, whereas super-VLAN technology is configured on a Layer 3 switch. MUX VLAN is more flexible in access control, but its configuration is complex.



This document provides a step-by-step guide for configuring VLANs on Huawei S5720 switches using the web interface. It includes instructions for accessing the interface, logging in, creating a new ...



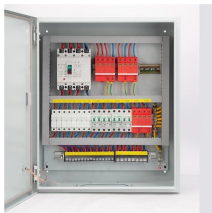
Configuring a Huawei switch to assign an IP address to VLAN 1 and binding multiple ports to it can seem challenging, but this step-by-step guide ...



In this lesson we will learn Huawei VLAN Configuration on Huawei Switches. VLAN Configuration is one of the key lessons for Huawei HCNA.



Virtual Local Area Network (VLAN) technology divides a physical LAN into multiple broadcast domains, each of which is called a VLAN. Hosts within a VLAN can communicate with each other but cannot ...



Creating a VLAN on a Huawei switch isn't just a technical task—it's a strategic move. From blocking hackers with port isolation to slashing costs through smart segmentation, every step ...



In enterprise campus networks, a common design is to use a Huawei Layer 3 campus switch as S5730 series, while an upstream router provides Internet access.

Contact Us

For more information, pricing, or custom network solutions, please contact us:

Website: <https://hashherbcafe.co.za>

Email: hello@hashherbcafe.co.za

Phone: +27 63 814 7295

Address: 15 Galaxy Road, Linbro Business Park, Johannesburg, 2065, South Africa

This document is for informational purposes only. Specifications subject to change without notice.

