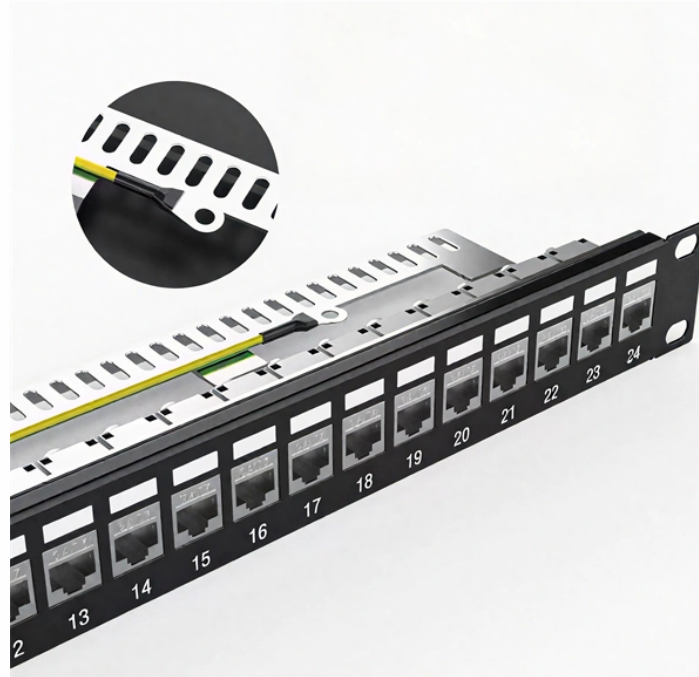


## Computing Power Optical Module CPO Company



## Computing Power Optical Module CPO Company



This article provides a comprehensive overview of CPO optical modules, exploring their technology, benefits, challenges, and the pivotal role they play in future data centers and AI ...



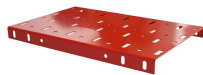
In a technical paper, IBM introduces a new CPO prototype module that can enable high-speed optical connectivity. This technology could significantly increase the bandwidth of data center ...



POET Technologies is a design and development company offering high-speed optical engines, light source products, and custom optical modules for the artificial intelligence systems ...



CPO switches shorten the electrical signal path, reduce power consumption, and decrease the number of pluggable modules by co-packaging optical modules with ...



SCALE CPO solution is the industry's first OCI MSA capable platform and built with GF's proven silicon photonics technology MALTA, N.Y., May 4, 2026 - GlobalFoundries (Nasdaq: GFS) ...



Check out our webinar, Scalable Fiber Solutions for Co-Packaged Optics (CPO) Applications, in which industry experts from Corning and Broadcom explore key design considerations, fiber handling ...



CPO switches shorten the electrical signal path, reduce power consumption, and decrease the number of pluggable modules by co-packaging optical modules with switch chips, while improving link ...



Co-packaged optics (CPO) will play a fundamental role in improving the performance, efficiency, and capabilities of networks, especially the scale-up fabrics for AI systems.



CPO is a game-changer in high-speed networking, offering solutions to the limitations of traditional optical transceivers. By integrating optics directly with switch ASICs, CPO eliminates the need for ...



CPO packages optical engines with computing chips to significantly reduce power consumption and latency, while OCS provides efficient interconnects for large-scale GPU clusters ...

## Contact Us

For more information, pricing, or custom network solutions, please contact us:

Website: <https://hashherbcafe.co.za>

Email: [hello@hashherbcafe.co.za](mailto:hello@hashherbcafe.co.za)

Phone: +27 63 814 7295

Address: 15 Galaxy Road, Linbro Business Park, Johannesburg, 2065, South Africa

This document is for informational purposes only. Specifications subject to change without notice.

