

Compatible QSFP high-speed optoelectronic connection Turkish supplier

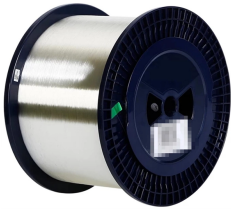


Overview

Our complete quad small form factor pluggable, QSFP connector portfolio includes QSFP+, zQSFP, QSFP28, QSFP56 and QSFP 112G. We provide a large range of simple and customizable design options. Our QSFP portfolio provides a simple upgrade path from 10 Gbps NRZ to 112Gbps PAM-4 — including four. Intrepid backplane connector, ultra-high density with 2.0 mm spacing, 360-degree full shielding design, hidden contact design, good guide protection to ensure mutual reliability, providing different forms including parallel plate, backplane connector, coplanar connector, orthogonal plate and gusset. Amphenol's ExtremePort™ QSFP interconnect system is a high-performance, 38 position, 0.8mm pitch connector platform engineered for high-speed serial applications. Designed to support next-generation data rates while maintaining backwards compatibility, the platform delivers exceptional signal. QSPTEK provides Crytek with high-density and high-reliability network solutions to help them solve cabling issues and network expansion problems in the face of future business growth. Explore how QSPTEK enhanced Intrado

Life & Safety's Emergency Response Command Center with high-bandwidth. The QSFP28 module provides 100GBase-LR4 throughput up to 10km over a standard pair of single mode fibre (SMF) with duplex LC connectors. This transceiver is compliant with IEEE 802.3 100GBASE-LR4, SFF-8665 and SFF-8636 standards. Digital diagnostics functions are also available via the I2C. 28G NRZ, 56G PAM-4, 112G PAM-4, up to 100, 200 or 400 Gbps aggregate. Pervasive bandwidth requirements due to the tremendous growth in wireless devices are the catalyst for large-scale (200 Gbps).

Compatible QSFP high-speed optoelectronic connection Turkish sup



The QSFP28 module provides 100GBase-LR4 throughput up to 10km over a standard pair of single mode fibre (SMF) with duplex LC connectors. This transceiver is compliant with IEEE 802.3 ...



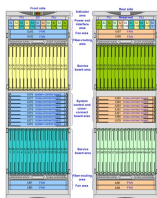
Learn how to choose the right QSFP LC transceiver for 40G and 100G fiber networks — balancing performance, reach, and compatibility.



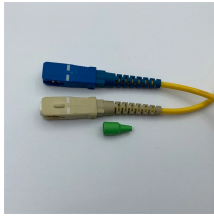
This article explores how to interconnect OSFP and QSFP-DD ports in 400G/800G networks, covering key principles, form factor differences, and practical solutions for stable, high-speed data center ...



Systems designed with QSFP-DD ports are backwards compatible to support existing QSFP+, QSFP28, and QSFP56 modules. This provides flexibility for network designs and migrations to next-generation ...



Our complete quad small form factor pluggable, QSFP connector portfolio includes QSFP+, zQSFP, QSFP28, QSFP56 and QSFP 112G. We provide a large range ...



Our complete quad small form factor pluggable, QSFP connector portfolio includes QSFP+, zQSFP, QSFP28, QSFP56 and QSFP 112G. We provide a large range of simple and customizable design ...



The QSFP28 module provides 100GBase-LR4 throughput up to 10km over a ...



Amphenol's ExtremePort™ QSFP 112G interconnect system is comprised of a 38-position, 0.8mm pitch connector built for use in high speed serial applications. Each port offers 4 ...



QSFP Connector System 28G NRZ, 56G PAM-4, 112G PAM-4, up to 100, 200 or 400 Gbps aggregate. Offer low insertion loss and cross talk plus excellent electromagnetic interference (EMI) containment.



The QSFP+ cable assemblies are high performance, cost effective I/O solutions for 40G LAN, HPC and SAN applications. QSFP+ copper modules allow hardware manufactures to achieve high port ...



The QSFP DD interconnection system features 76-bit 0.8 mm pitch connectors designed for high-speed serial applications. Each port contains 8 50Gb/s electrical interfaces, which can support a total ...



Various high-speed transceiver types are on the market, including SFP+, SFP28, QSFP+, QSFP28, QSFP56, QSFP112, QSFP-DD, OSFP, etc. What are the differences between them? In ...

Contact Us

For more information, pricing, or custom network solutions, please contact us:

Website: <https://hashherbcafe.co.za>

Email: hello@hashherbcafe.co.za

Phone: +27 63 814 7295

Address: 15 Galaxy Road, Linbro Business Park, Johannesburg, 2065, South Africa

This document is for informational purposes only. Specifications subject to change without notice.

