

Cold storage electrical distribution box rst



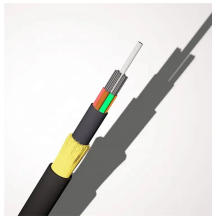
Cold storage electrical distribution box rst



for this: distribution boxes. Our system distribution boxes offer the perfect installation space for a wide range of applications, from pure power and data distribution to room automation applications and ...



The main products include cold room solution, semi-hermetic, hermetically sealed refrigerant compressors and condenser units, various kinds of air-cooled condensers, air coolers and related ...



The main products include cold room solution, semi-hermetic, ...



Hemstedt offers pre-wired electrical distribution boards especially for use in cold storage and deep-freeze rooms. All cables are brought together here and connected according to the wiring diagram ...



There are several types of electric boxes used in cold storage facilities, each serving a unique purpose in monitoring, controlling, and protecting the refrigeration system. Below is a detailed breakdown of ...



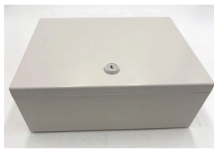
A continually updated all inclusive guide to everything electrical in the game Rust. This handbook will include everything you need to find, craft, wire, and utilize different useful circuits in game.



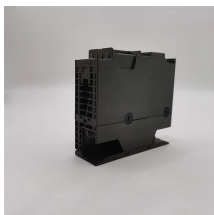
Prior to storage, verify cold box interior is sealed air-tight. Inspect flexible closeout boots, flanges, instrument ports, and other covered or sealed wall openings for damage and proper sealing.



In this paper, a test was conducted to investigate the effects of HTA, APOR and AOP on temperature elevating rate and temperature standard deviation to assess the cold energy release ...



Eliwell France offers solutions pre-wired enclosures for positive or negative cold storage applications but also applications for industrial and commercial refrigeration . In addition, security solutions that ...



RSD Fiberglass Cooling Towers are both durable and economical, with stock models ranging from 5 to 500 tons. Total control teams with HVAC contractors to provide building automation systems, ...



Typically, cold rooms with onboard condensers or packaged units are used in small stores, while cold rooms served by compressor racks are used in supermarkets and distribution centers.

Contact Us

For more information, pricing, or custom network solutions, please contact us:

Website: <https://hashherbcafe.co.za>

Email: hello@hashherbcafe.co.za

Phone: +27 63 814 7295

Address: 15 Galaxy Road, Linbro Business Park, Johannesburg, 2065, South Africa

This document is for informational purposes only. Specifications subject to change without notice.

