





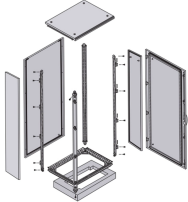
## China Laser Diode Test Socket

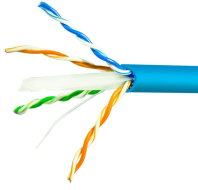


### Overview

Laser Diode Test Socket 3-pins LD Socket TO-18 (5. Small size, easy to install and use 1. BOSA, TOSA, ROSA coaxial. Thorlabs offers a versatile range of accessories for convenient integration of laser diodes into functional systems. 3-5 days after receiving the payment by T/T, PAYPAL, and other ways. Sample order with fast delivery. Our photodiode sockets, which can be permanently soldered into your system, are offered in both solder tail and pass-through designs. The pass-through design allows leads to pass directly through the receptacle, which eliminates the need to shorten any leads and reduces the risk of damaging your. Laser Diode Socket is socket developed for the packaging and testing of laser diodes, TOSA, BOSA and ROSA. It is an essential tool for manufacturers of optical active components. Most of the laser diode sockets required by optical active component manufacturers have a single specification, short. Laser Diode Laser Tube test Socket TO-18 TO-56 5.

## China Laser Diode Test Socket

	<p>Laser Diode Laser Tube test Socket TO-18 TO-56 5.6mm Socket Gold-plated ...</p>
	<p>5.6mm Laser Diode LD Socket Base for Plastic Package Laser Diode 1.99 Add to cart Details Quick View Out of stock</p>
	<p>We offer a variety of sockets compatible with laser diode packages such as TO-18, TO-46, TO-52, and TO-72. We also provide cable-equipped sockets designed for FCD.</p>
	<p>Dongguan Biueuniverse Laser Co.,Ltd was established in September 2010 and have established two own brands "LANJI" and "BU-LASER" .Though continuous efforts by every stuff, Blueuniverse has ...</p>
	<p>Three-legged laser diode test, the length of pin is universal. 2. Low resistance, not easy to oxidize, long service life. 3. Small size, easy to install and use. 1. Laser diode test. 2. BOSA, TOSA, ROSA coaxial ...</p>



Enjoy Free Shipping Worldwide! Limited Time Sale Easy Return.



These laser diode sockets are ideal for OEM-type implementations and are compatible with our selection of Ø3.8 mm, Ø5.6 mm, Ø9 mm, and TO-5 laser diode packages. All of these sockets are ...



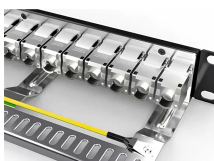
Laser Diode Socket is socket developed for the packaging and testing of laser diodes, TOSA, BOSA and ROSA. It is an essential tool for manufacturers of optical active components.



Thorlabs offers a versatile range of accessories for convenient integration of photodiodes and laser diodes into functional systems. Our photodiode sockets, which can be permanently soldered into ...



Mouser offers inventory, pricing, & datasheets for Laser Diode Socket IC & Component Sockets.



Laser Diode Laser Tube test Socket TO-18 TO-56 5.6mm Socket Gold-plated Connection Socket. Realpoop offers competitive prices and reliable quality for industrial use. | Alibaba

## Contact Us

For more information, pricing, or custom network solutions, please contact us:

Website: <https://hashherbcafe.co.za>

Email: [hello@hashherbcafe.co.za](mailto:hello@hashherbcafe.co.za)

Phone: +27 63 814 7295

Address: 15 Galaxy Road, Linbro Business Park, Johannesburg, 2065, South Africa

This document is for informational purposes only. Specifications subject to change without notice.

