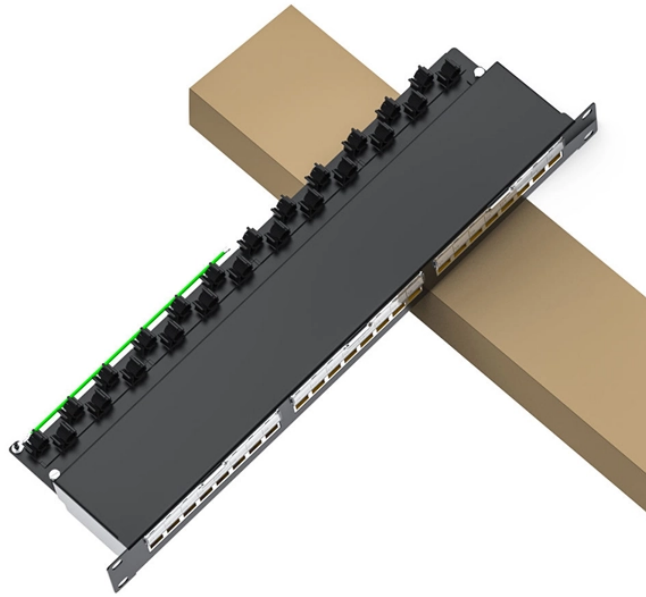


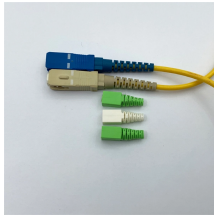
Characteristic diagram of aluminum alloy cable tray



Characteristic diagram of aluminum alloy cable tray



Even though a 900 mm wide tray has six (6) times the volume of a 150 mm wide tray, it cannot carry any more cable weight. When piling cable in tray, the required air separation between cables can be ...



Aluminum Cable Tray systems are lighter than steel cable tray and Certified CSA Cable Tray, UL listed, NEMA and certified. Because of their lighter weight aluminum cable trays are easier to install than ...



Zip Cable Tray Systems, a division of RangeRack Inc, was designed in 1994 at the specific request of the telecom industry for a lightweight cable tray system that was strong, yet fast and easy to install.



Aluminum alloy cable tray. This standard specifies the terms and definitions, classification and marking, requirements, test methods, inspection rules, signs, and use of aluminum alloy cable ...



Extra wide aluminum rungs are welded to extruded aluminum I-beam side rails. Every second rung is reversed to allow for easy top or bottom mounting of cable ties and clamps. All edges and welds are ...



This article explores the design, benefits, installation practices, and real-world applications of aluminum alloy cable trays, providing actionable insights for your next project.



When fitting cable trays and their accessories, the products are cut on site to create changes of direction, adjust sections, etc. Damage can also occur during handling; as a result, both the ...



In accordance with its continuous improvement policy, Legrand reserves the right to change the specifications and illustrations without notice. All illustrations, descriptions and technical information ...



Hubbell's NEXTFRAME® Ladder Tray is the effective and widely used cable runway that supports and delivers bundles of cable between cabinets, racks, and closets, along walls, and suspended from ...



The document provides detailed specifications for aluminum cable trays, including features, accessories, material compliance, and load ratings. It outlines various applications in commercial and industrial ...



Submittal Drawings: Submit drawings of cable tray and accessories including clamps, brackets, hanger rods, splice plate connectors, expansion joint assemblies, and fittings, showing accurately scaled ...



The straight sections and fittings feature perforations along the side rail to allow you to quickly and easily alter the system. Plus, add-rung-kits allow you to add rung at any location along the length of the tray ...

Contact Us

For more information, pricing, or custom network solutions, please contact us:

Website: <https://hashherbcafe.co.za>

Email: hello@hashherbcafe.co.za

Phone: +27 63 814 7295

Address: 15 Galaxy Road, Linbro Business Park, Johannesburg, 2065, South Africa

This document is for informational purposes only. Specifications subject to change without notice.

