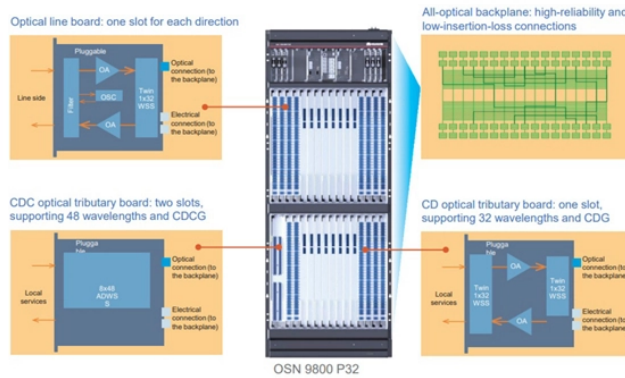


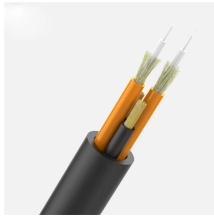
Ceramic Flanger Coaxiality Machining Equipment



Ceramic Flanger Coaxiality Machining Equipment



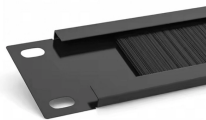
We design, machine and manufacture advanced technical ceramic machined precision parts and components. The advantages of ...



We design, machine and manufacture advanced technical ceramic machined precision parts and components. The advantages of technical ceramic machining are applications for low weight ...



Based on the powerful Wachs SDB series I.D. mount end prep machines, the Wachs FF series flange facers offer a rugged, lightweight and compact design that allows them to fit into elbows and tight ...



If you're in need of a technical ceramics manufacturer for grinding services, Ferro-Ceramic is ready and able to get the job done. Learn more about our grinding process, from our systems to ...



With our in-house machine shop, we also produce precision machined plastic and metal parts. Our clean room assembly capabilities allow us to offer turn-key manufacturing solutions.



Automate tank and vessel fabrication with hydraulic Flanging Machines. Create precise flanges on dished ends. Get specs & a quote from Gator FabTech.



Some feature of the machine: The flanging-punching and closed re-flanging units are positioned in radial sense respect to the work piece and their positioning is easy and quick thanks to some handwheels ...



Advanced Industrial Ceramics (AIC) performs precision machining and grinding services on the world's hardest materials for the most demanding customers.



These robust and accurate flange facers create a continuous groove spiral serrated finish - essential for achieving leak-free connections on many types of flange joint. Several flange facers can also be ...



From job shop applications to high-volume production, a Parmigiani flanging machine will exceed your quality and precision expectations. All Parmigiani flanging machines are designed for simple use and ...



Discover our flanging and head forming machines, offering unmatched efficiency, strength, and durability. Perfect for robust and precise metal shaping.

Contact Us

For more information, pricing, or custom network solutions, please contact us:

Website: <https://hashherbcafe.co.za>

Email: hello@hashherbcafe.co.za

Phone: +27 63 814 7295

Address: 15 Galaxy Road, Linbro Business Park, Johannesburg, 2065, South Africa

This document is for informational purposes only. Specifications subject to change without notice.

