

# **Canadian Vertical Shaft Cable Tray Company**



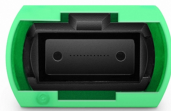
## Canadian Vertical Shaft Cable Tray Company



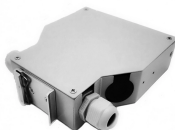
SuperiorTray is an economical support system designed to organize and protect cables and wires in electrical distribution systems. Certified by CSA, UL, and NOM, and compliant with NEMA standards, ...



All aluminum and steel ladder tray, as well as one-piece tray and channel tray, are manufactured at our Iberville plant in Saint-Jean-sur-Richelieu, Quebec. We also operate a separate cable tray facility in ...



Since 1979, we've partnered with the Canadian electrical industry to supply their electrical enclosure, kiosk, cable tray and custom fabricated metal products across the country.



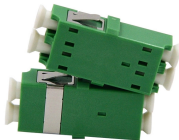
Based in Hamilton, Ontario, Niedax CER manufactures a wide range of electrical raceway systems tailored to meet the diverse needs of customers across Canada. Our product offerings include cable ...



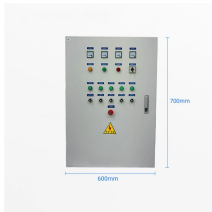
As a trusted manufacturer of CSA approved products, we pride ourselves on delivering excellence. With a diverse product line that includes Cable Trays, Underfloor Duct, and more, Niedax CER is your ...



Mesh cable trays, cable trays, vertical ladders or floor ducts - we have the right product for every application. Our solutions meet the highest requirements of load-bearing capacity and safety.



CER attaches great importance to quality, innovation and customer satisfaction. CER has been producing cable trays, cable ducts, floor boxes and wire mesh trays for the Canadian market for over ...



No need for any drilling which makes for an extremely fast and simple installation. Compare B-Line or Thomas & Betts cable trays to ZipTray for an informed decision.



Explore top cable tray manufacturers in Canada like Superior Tray, Unitray, Graybar Canada, Zip Tray, and Lumen. Discover reliable cable management solutions for industrial and ...



Unitray is a leading manufacturer and supplier of aluminum cable trays in Canada.

## Contact Us

For more information, pricing, or custom network solutions, please contact us:

Website: <https://hashherbcafe.co.za>

Email: [hello@hashherbcafe.co.za](mailto:hello@hashherbcafe.co.za)

Phone: +27 63 814 7295

Address: 15 Galaxy Road, Linbro Business Park, Johannesburg, 2065, South Africa

This document is for informational purposes only. Specifications subject to change without notice.

