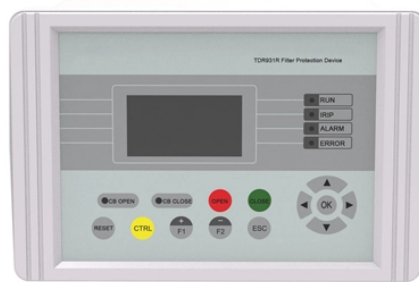


Canadian Flame-Retardant Cable Tray Installation



Canadian Flame-Retardant Cable Tray Installation



Cable tray installation must comply with specific technical standards to ensure electrical safety, system reliability, and long-term maintainability. This document outlines the key requirements for cable tray ...



Proper cable tray selection, fire-resistant materials, professional installation, and preventive maintenance all contribute to reducing electrical fire risks. By implementing effective fire safety ...



The FireMaster® cable tray wrap system provides 30 minutes hydrocarbon fire protection to cable trays carrying control cable wiring. The FireMaster® cable tray wrap consists of FireMaster® Marine Plus ...



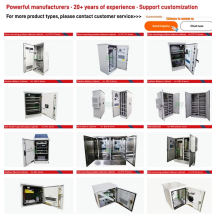
Specifies requirements for metal cable trays and associated fittings designed for use in accordance with the rules of Canadian Electrical Code, Part I and the National Electrical Code®



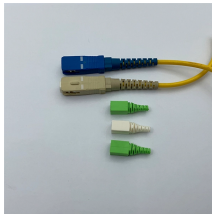
Some of these criteria include the required load that the cable tray must support, the distance between the cable tray supports, and ease of handling and installation.



Cable tray length is selected based on the load to be supported, the distance between the supports (also referred to as the span), and handling and installation constraints.



3.2.2 All material to properly install the cable tray shall be provided. The cable tray system shall accommodate the weight of the horizontal and/or backbone cabling.



There should be no installation of the cable below the temperature rating that is marked on the cable. The ladder tray system must be complete before the cable/conductors are installed.



The guide draws on standards from NEMA, the National Electrical Code, and the Canadian Electrical Code to provide engineers and installers with best practices ...



The guide draws on standards from NEMA, the National Electrical Code, and the Canadian Electrical Code to provide engineers and installers with best practices for implementing cable tray systems.



Cable tray installation must comply with specific technical standards to ensure electrical safety, system reliability, and long-term maintainability. This document ...



The Cable Tray Institute is making available the current edition of this practical guide for the proper installation of aluminum or steel cable tray systems. These guidelines will be useful to engineers, ...

Contact Us

For more information, pricing, or custom network solutions, please contact us:

Website: <https://hashherbcafe.co.za>

Email: hello@hashherbcafe.co.za

Phone: +27 63 814 7295

Address: 15 Galaxy Road, Linbro Business Park, Johannesburg, 2065, South Africa

This document is for informational purposes only. Specifications subject to change without notice.

