

## Can the optical port of the switch be left unused



### Overview

The TX+/- and RX+/- pins of the unused port should be unconnected, whether or not the PHY is powered down by register setting. Do I need to protect SFP ports and optics from dust/contaminants?

If so, how?

I have a used switch with some SFP ports and some SFP modules installed, which I don't use. All new switches come with little rubbery bungs that block up unused SFP ports, but since this old procure was in use, those. What should be done with the pins of an unused PHY port on an a 10/100BASE-T Ethernet Switch?

This answer applies to switches with 4 or more ports since it makes little sense to not use a PHY port on a 3-port switch. Note that QSFP-DD and SFP-DD transceivers don't have ejector levers, instead they have a pull tab which can be used to unlock and remove the transceiver. Before removing the transceiver, make sure that you. Hi all, What is the disadvantage or risk about

leaving some unused ports and aggregate ethernet. In the CCNA course, trainer always strongly advised on shutdown the unused. Does turning off unused ports on switches have any impact on power consumption?

Don't currently have a power meter (ordered, on its way), and was curious if there is any impact on power consumption by turning off unused ports, both PoE and non-PoE?

Switches I have are Lite 8, Lite 16 and Flex XG.

## Can the optical port of the switch be left unused



I'm trying to understand the thought process with this recommendation in the Cisco Press lab. Below is the relevant information from the lab. I didn't find anything really explaining the reason in a quick ...



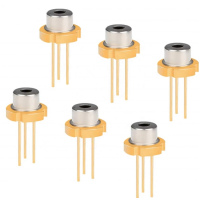
Do not leave a fiber-optic transceiver uncovered except when inserting or removing a cable. The rubber safety cap keeps the port clean and protects your eyes from accidental exposure to laser light. Do ...



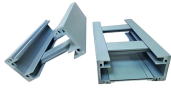
And that means the most versatile socket on your network switch might be left unused. That's the SFP/SFP+/SFP28/QSFP+/QSFP28 slot, which are designed to use Direct-Attached-Copper (DAC),...



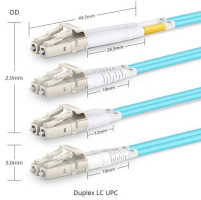
If you remove unused SFPs and store them in a clean container ...



There is really no difference at all between any vendor on the risks and best practices for unused ethernet switch ports. The risks are the same and the recommendations are industry wide not vendor ...



The power consumption is minimal in CPU usage and turning off the PoE would not cause much of an effect on overall power consumption of the switch. As others have said it's like the unused outlets in ...



If you remove unused SFPs and store them in a clean container that's fine as well. Don't forget about empty panel jacks, they're even harder to clean or replace.



Unused ports on a switch can be an entry point for unauthorized access to the network. Attackers can connect to them and gain access to the network, which can result in data theft, ...



For port security, I use 802.1x. It makes it much harder to get an unauthorized device on the network, be they plug into the switch directly or replace the device on an otherwise "live" and ...



Any port that's not used is not patch in. All the switches are locked away, so no need to worry. There is no great reason to leave a port enabled without a device attached. To make moves ...



Ideally, any unused integrated PHY should be powered down using the appropriate register setting. While this is the preferred method, it is not mandatory. If the PHY is not powered down, it will remain ...

## Contact Us

For more information, pricing, or custom network solutions, please contact us:

Website: <https://hashherbcafe.co.za>

Email: [hello@hashherbcafe.co.za](mailto:hello@hashherbcafe.co.za)

Phone: +27 63 814 7295

Address: 15 Galaxy Road, Linbro Business Park, Johannesburg, 2065, South Africa

This document is for informational purposes only. Specifications subject to change without notice.

