

Can a single-mode fiber optic cable be connected to a multimode device



Overview

A: Generally speaking, the answer is "no". Large optical loss will occur if a multimode transceiver is connected with single mode fiber. For example, 1000BASE-LX single mode SFP can work on multimode fiber cable by using mode conditioning fiber. It's possible because Multi-mode optical cables have a very wide fiber core - 62. However, it's important to note that this method may have. Multimode fiber cabling is used for indoor, short distance applications and single-mode fiber cabling is used for outdoor, long distance application. These two types of fiber optic cables have different core diameters and characteristics, and they are optimized for different types of data transmission: Single-Mode Fiber (SMF): Single-mode. I've seen people use a single-mode SFP with a multi-mode patch cable (like 100m OM3). But expect power loss, CRC errors, and unstable connectivity. Use this setup for temporary, non-critical situations.

Can a single-mode fiber optic cable be connected to a multimode de



In modern communication networks, fiber optic cables are everywhere. Whether in the core network, access network, or even connecting the end-user optical cat, fiber is like a chain ...



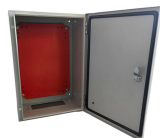
This article will give you a clear explanation about the feasibility of the solutions, and introduce two relevant devices: mode conditioning cable and multimode to single-mode fiber media ...



Fiber mode conversion is needed to enable connectivity between multimode and single-mode fiber cables, or to connect a multi-mode fiber cable to device that accepts single-mode wavelengths (or ...



Can we connect multimode SFP with Single mode fiber? Short answer is - No! An extended answer is - You could try, and on some occasions, it may even work in very short ...



Using a single-mode patch cable for a multimode application, or vice versa, is generally not recommended. These two types of fiber optic cables have different core diameters and ...



When single-mode and multimode cabling are mixed in the same network, they may have problems dealing with the two types of signals. However, two devices can be connected using ...



Connecting a multi-mode SFP to single-mode fiber creates a major signal mismatch. A small portion of the transmitted light gets captured. This leads to high attenuation and frequent link drops. I suggest ...



Multimode fiber optic cables are engineered with a larger core diameter—typically 50 or 62.5 microns—compared to single mode fibers, and they are terminated with various fiber optic ...



Yes, it is possible to splice single mode fiber to multimode fiber using a mode conditioning patch cord. This type of patch cord helps to transfer the single mode signal into a multimode signal ...



In summary, while it may be technically possible to use a single-mode SFP with multimode fiber, it is not recommended due to the significant potential for signal loss, increased error rates, and reduced ...

Contact Us

For more information, pricing, or custom network solutions, please contact us:

Website: <https://hashherbcafe.co.za>

Email: hello@hashherbcafe.co.za

Phone: +27 63 814 7295

Address: 15 Galaxy Road, Linbro Business Park, Johannesburg, 2065, South Africa

This document is for informational purposes only. Specifications subject to change without notice.

