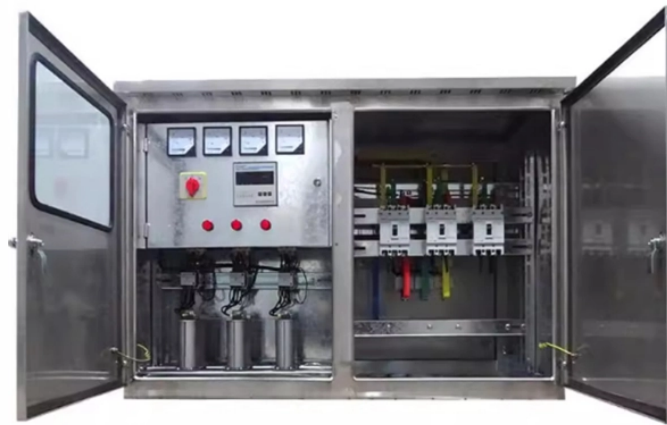


## Can a secondary distribution box be fitted with a socket



### Overview

Junction boxes can be used to connect additional sockets to circuits, add lighting points, extend circuits, and in general they are a way of getting power from an existing source and taking it somewhere else. They can also be used for repairs. The Secondary Distribution Box (SDB) receives power from Main Power Distribution box via an extender cable and provides a central power distribution to feed normal branch circuits to the electric floor modules through snap-on extender cables. The SDB can be fitted with terminal blocks for custom. A distribution box is the heart of any electrical system. NEC Article 408 covers switchboards, switchgear, and Panelboards installation and applications. Let's make an example for clarity: A newly constructed residential area introduces a 10kV power line to a substation.

## Can a secondary distribution box be fitted with a socket



Introduction  
 Understanding The Components of A Distribution Box  
 Selecting The Right Distribution Box  
 Site Preparation and Location Requirements  
 Electrical Connections and Wiring  
 Compliance with Standards and Regulations  
 Conclusion  
 Proper installation of a distribution box isn't just a technical requirement. It's a vital step in ensuring the safety and efficiency of your entire electrical system. Following best practices reduces the risk of electrical fires, power outages, and other hazards, protecting your property and keeping everyone safe. If you're looking for a reliable,...  
 See more on eabel  
 Published: Feb 7, 2025  
 Electrical Technology



What's the difference between a distribution box and a sub-panel? A distribution box typically refers to the main electrical panel that receives power from the utility service. A sub-panel is ...



The SDB can be fitted with terminal blocks for custom wiring. The Secondary Distribution Box (SDB) is provided in powder coated black finish.



You can't install feeder and branch-circuit conductors in the same raceway, cable, handhole enclosure, or underground box with service conductors [230.7]. Doing this would bypass the feeder or branch ...



The main service panel must have a main disconnect or breaker that can disconnect all power to the building. The disconnect must be located either in the panel or adjacent to the panel.



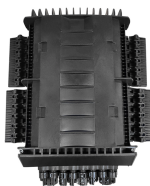
In a broad sense, any electrical box can be used as a junction box. Most standard code-approved electrical boxes found at home centers can be used as junction boxes.



In this guide, we'll explain why a secondary consumer unit is often necessary, how it should be installed, and what safety measures ensure reliable and compliant operation.



This guide provides information on how to select the appropriate Distribution Box for Electric project. If you have any questions about distribution boxes, please feel free to contact us.



Adheres to the principle of “one machine, one circuit breaker, one RCD, one box, one lock,” prohibiting a single circuit breaker from controlling multiple devices or outlets.



Learn how to install a distribution box safely and correctly. Covers wiring, placement, standards, and expert tips for a compliant setup.



Learn how to wire a junction box to provide power to additional sockets, lights and switches easily and safely

## Contact Us

For more information, pricing, or custom network solutions, please contact us:

Website: <https://hashherbcafe.co.za>

Email: [hello@hashherbcafe.co.za](mailto:hello@hashherbcafe.co.za)

Phone: +27 63 814 7295

Address: 15 Galaxy Road, Linbro Business Park, Johannesburg, 2065, South Africa

This document is for informational purposes only. Specifications subject to change without notice.

