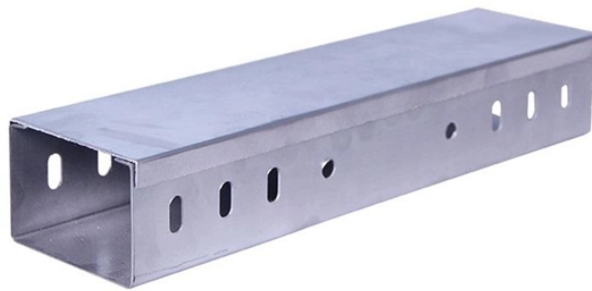


Can a disk array be connected to a fiber optic cable



Overview

It links disk arrays and tape drives to your hosts via fiber channel or iSCSI paths. Each server then sees a shared logical unit as its own local drive. Plus, the setup spans up to ten kilometers for safe. BTW, did you get a disk tray or an entire array?

I mean, most disk arrays are arranged in a way that one or more "disk trays" are connected via FC to array controllers. On the other way, there were. A SAN is a high-speed network that pools block-level storage for many servers. That direct, low-delay link keeps backup and live traffic off the. Follow the instructions outlined below to attach fiber optic jumper cables directly from HCP G11 Node s to storage arrays. It supports data backup and replication. Fibre Channel is needed, as it is very flexible and enables the.

Can a disk array be connected to a fiber optic cable



You can do all sorts of cool stuff with FC, but at a minimum, all you need is an HBA, a cable (usually fiber), an enclosure and at least one disk in it. You already have the enclosure and ...



We currently recommend duplex fiber optic cabling be used for all Fibre Channel purposes. More detailed recommendations on cabling and transceivers can be found in our Getting started with SNS ...



Fibre Channel is a high-speed network technology used to connect server to data storage area network. It handles high performance of disk storage for applications on many corporate networks.



Follow the instructions outlined below to attach fiber optic jumper cables directly from HCP G11 Nodes to storage arrays. The HCP G11 Nodes and the storage arrays must be in the same rack in an ...



Thus, many servers connect to the same disk group, ensuring optimal repository system use and backups. SANs configured with fiber optic cables offer more advantages. These devices can ...



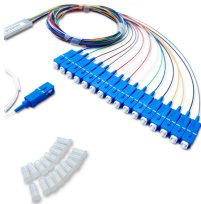
Follow the instructions outlined below to attach fiber optic jumper cables directly from HCP G11 Nodes to storage arrays. The HCP G11 Nodes and the storage arrays must be in the same rack in an ...



When the technology was originally devised, it ran over optical fiber cables only and, as such, was called "Fiber Channel". Later, the ability to run over copper cabling was added to the specification.



We currently recommend duplex fiber optic cabling be used for all Fibre Channel purposes. More detailed recommendations on cabling and transceivers can be ...



Data center fiber connectivity refers to the network infrastructure that enables data transmission between servers, storage systems, and other devices within a data center using fiber optic cables.



This technical diagram demonstrates the optimal fiber optic cable routing and distribution architecture for modern data centers. You might see a hierarchical model: a Core layer that interconnects multiple ...



The SAN network adopts Fibre Channel technology, which is connected to the storage array and server host through optical switches to establish a dedicated data storage area network. If multiple servers ...



Was a common setup for HPE 3Par and Primera arrays combined with C7000 enclosures. There were reference architectures, white papers and all. Unsure if HPE still recommends or pushes that setup, ...

Contact Us

For more information, pricing, or custom network solutions, please contact us:

Website: <https://hashherbcafe.co.za>

Email: hello@hashherbcafe.co.za

Phone: +27 63 814 7295

Address: 15 Galaxy Road, Linbro Business Park, Johannesburg, 2065, South Africa

This document is for informational purposes only. Specifications subject to change without notice.

