

## Can a PoE switch be connected to a PoE switch



## Can a PoE switch be connected to a PoE switch



Appropriate Ethernet cables must be used to connect with the PoE and normal switch by means of a physical connection. Use the cables correctly and plug each end cable to the ...



Type 3 Type 3 is also known as PoE++, which can carry up to 60W for each PoE port (minimum power ensured on each PD port is 51W) over a single RJ45 cable to power devices like ...



Modern poe switches can detect the type of connections they get. Older versions weren't as smart and could toast a none poe device (including another switch). So connecting another switch ...



In this video, we will demonstrate how to link two Power over Ethernet (PoE) switches using Cat6 Ethernet cables.



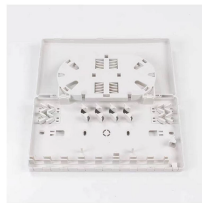
Appropriate Ethernet cables must be used to connect with the PoE and normal switch by means of a physical connection. Use the cables correctly and ...



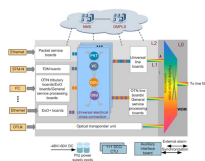
It doesn't pass through the POE just runs from POE. If you want to save a few bucks, for \$30 (and if they actually have them available), Unifi's Switch Flex Mini is 5 port POE powered without ...



Connect your PoE devices, such as IP cameras or wireless access points, to the PoE switch using Ethernet cables. To ensure compatibility and maximum performance, use PoE ...



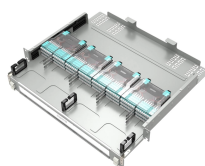
Yes, you can connect two PoE switches together, and this is a common scenario in many networking setups. When done correctly, linking PoE switches can enhance network capabilities, ...



The standard POE chip switch is serially connectable at the POE port. The standard chip switch can automatically detect the powered device, and the switch will not supply power without the device ...



Deciding whether to use a PoE switch or a PoE injector comes down to how many PoE devices you need to connect. Individual PoE devices, such as the odd network IP camera at the ...



When PoE devices enabled devices are connected to a PoE switch the devices request power by sending a detection signal to the switch and a handshake occurs to determine the ...

## Contact Us

For more information, pricing, or custom network solutions, please contact us:

Website: <https://hashherbcafe.co.za>

Email: [hello@hashherbcafe.co.za](mailto:hello@hashherbcafe.co.za)

Phone: +27 63 814 7295

Address: 15 Galaxy Road, Linbro Business Park, Johannesburg, 2065, South Africa

This document is for informational purposes only. Specifications subject to change without notice.

