

Calculation of optical cable laying



Overview

Compute the ratio between the diameter of your chosen cable and the diameter of the conduit you plan to use. They are provided. Use Corning's system design calculators to support accurate planning and validation of fiber optic, data center, and enterprise network infrastructures. Use the export buttons to share results. For critical links, verify on drawings and allow extra for rework. Fiber length takeoff starts with a measured route. Break the pathway into segments for tray runs, conduit sections, risers, and underground. There are two categories of length: cable length (also known as sheath length) and glass length.

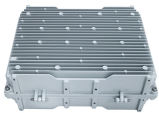
Calculation of optical cable laying



There are four ways to calculate the cable length. The method you use depends on what information you have from the field. The chosen method may vary among cables; it is recommended to set the most ...



The type of fiber optic cable and the fibers in the cable should be chosen appropriate for the type of communications system(s) being supported, the type of installation and the environment in which the ...



Fiber Optic Cable Length Calculator Estimate fiber length for every construction pathway. Include service loops, spares, and installation waste factors. Export results to share with your field team quickly.



The Input Parameters table contains cable and conduit parameters that may be selected with the exception of Cable Area. The selected values are used to populate the two lower tables that have ...



Our Calculators Can Assist You with Your Network Designs. This calculator allows you to plug in values for all variables that will impact your systems' performance. Compute the ratio between the diameter ...



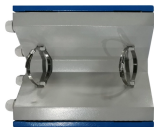
The Fiber Collimator Calculator helps determine optimal parameters, including lens focal length and beam diameter, for specific fiber types and wavelengths. Accurate collimation ensures optimal ...



Cable laying refers to deploying the optical fibre cable between the ends to be connected. There are several laying methods depending on the area where the cable laying needs to take place.



Use this calculator to estimate total optical attenuation across your network and confirm system performance against recommended design margins. The tool accounts for fiber attenuation, ...



While fiber optic cables are typically stronger than copper cables, it is still important that the cable maximum pulling tension not be exceeded during any phase of cable installation.



Some key considerations for installing optical fiber cable are highlighted below. Failure to follow these guidelines may result in damage or attenuation increases of the optical fiber or cable.

Contact Us

For more information, pricing, or custom network solutions, please contact us:

Website: <https://hashherbcafe.co.za>

Email: hello@hashherbcafe.co.za

Phone: +27 63 814 7295

Address: 15 Galaxy Road, Linbro Business Park, Johannesburg, 2065, South Africa

This document is for informational purposes only. Specifications subject to change without notice.

