

Calculation of cold aisle space in computer room



Overview

Aisle space - Provide adequate room at the front and back of cabinets and racks to allow unobstructed servicing of the systems and clear passage for personnel. Efficient airflow management in data centers relies heavily on proper Hot Aisle and Cold Aisle configurations. Hot Aisle/Cold Aisle. Data center operators seeking cost-effective cooling improvements are turning to cold aisle containment as the most retrofit-friendly solution for immediate efficiency gains. With typical cooling energy reductions of 20-35% and payback periods under three years, CAC systems offer the fastest path. Design complete HVAC systems for Data Centers and Server Rooms using real-world engineering practices and international standards. Calculate cooling loads for Data Centres including IT equipment heat load, lighting load, occupancy load, and fresh air requirements. utilized Power: PDU output available vs.

Calculation of cold aisle space in computer room



ASHRAE recommends laying out equipment racks according to the Hot Aisle-Cold Aisle layout, which means aligning IT equipment racks in rows, such that the cabinet fronts face the cool aisle, and ...



Follow Camali Corp's 6-step guide to design a server room layout that cuts cooling costs, boosts uptime, and optimizes airflow with hot/cold aisle design.



1) Monitor and manage the critical parameters associated with equipment installation, by area of the computer room (no more than two building bays): Space: number of cabinets and rack unit space ...



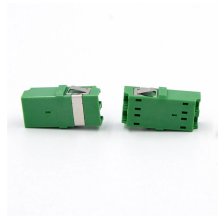
Complete cold aisle containment guide for data centers. Learn CAC benefits, implementation steps, and achieve 35% cooling cost reduction.



A regression equation was developed for calculating kW/ton based on outside air and chilled water supply temp. Actual tonnages were calculated based on the % utilization of chillers, ...



Strategies orient the IT racks in what is called a hot aisle/cold aisle layout. Cold aisles are formed by the space between the front faces of two rows of IT equipment racks



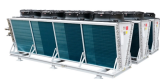
The cold aisle consists of perforated floor tiles separating two rows of racks. The chilled air from the perforated floor tiles is exhausted from the tiles and is drawn into the fronts of the racks. The inlets of ...



Proper aisle planning isn't just about airflow—it's about optimizing safety, serviceability, and system efficiency. By adhering to these length and width standards, data center designers can enhance ...



Several techniques can help optimize air flow in the data center. Arrange server racks in a hot aisle/cold aisle configuration. Most equipment manufactured today is designed to draw in air through the front ...



Anyone interested in learning hot aisle/cold aisle concepts, cooling load calculations, redundancy systems (N+1, 2N), and energy-efficient HVAC design for server rooms and Data Centres.

Contact Us

For more information, pricing, or custom network solutions, please contact us:

Website: <https://hashherbcafe.co.za>

Email: hello@hashherbcafe.co.za

Phone: +27 63 814 7295

Address: 15 Galaxy Road, Linbro Business Park, Johannesburg, 2065, South Africa

This document is for informational purposes only. Specifications subject to change without notice.

