

## Cable trays should be purchased according to actual length



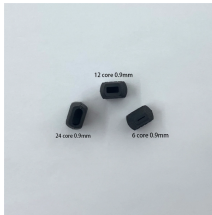
## Cable trays should be purchased according to actual length



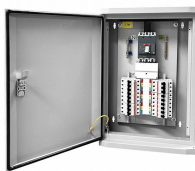
Size conductors installed in cable tray with NEC 392, NEC 310.16, tray fill, ampacity adjustment, voltage-drop checks, grounding, and IEC design cross-checks.



We will first explain standard cable tray dimensions used across the industry, then examine how dimensions vary by tray type, and finally show how to calculate and select the correct ...



We will first explain standard cable tray dimensions used across the industry, then examine how dimensions vary by tray type, and finally show how to ...



Many electrical systems employ cable trays. They route cables safely & efficiently. NEC defines minimum cable tray size & electrical installation specifications. These guidelines protect ...



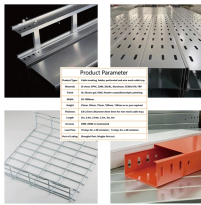
If these cables above would completely fill a 30-inch wide cable tray, selecting a 36-inch wide tray in your design would make space available for future cables.



Cable tray size calculation is important for ensuring safe cable installation, proper heat dissipation, and enough spare capacity for future expansion. In this guide, you will learn how to ...



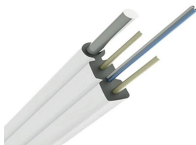
In order to determine the most appropriate and economical system, a class should be selected that reflects the actual total working load and support span for each application. Some applications may ...



Core rules for selecting, installing, grounding, and filling cable trays—clearances, materials, separation, and bonding explained.



Selecting the appropriate electrical cable tray dimensions is a critical decision that directly impacts the safety, efficiency, and longevity of any industrial or commercial electrical installation. ...



Learn how to calculate the perfect cable tray size and dimensions for your electrical project. This guide covers load capacity, fill ratios, and industry standards.



This guide covers the cable tray types and their appropriate applications, the fill rules for each configuration, ampacity derating requirements, separation of power and signal cables, and the ...

## Contact Us

For more information, pricing, or custom network solutions, please contact us:

Website: <https://hashherbcafe.co.za>

Email: [hello@hashherbcafe.co.za](mailto:hello@hashherbcafe.co.za)

Phone: +27 63 814 7295

Address: 15 Galaxy Road, Linbro Business Park, Johannesburg, 2065, South Africa

This document is for informational purposes only. Specifications subject to change without notice.

