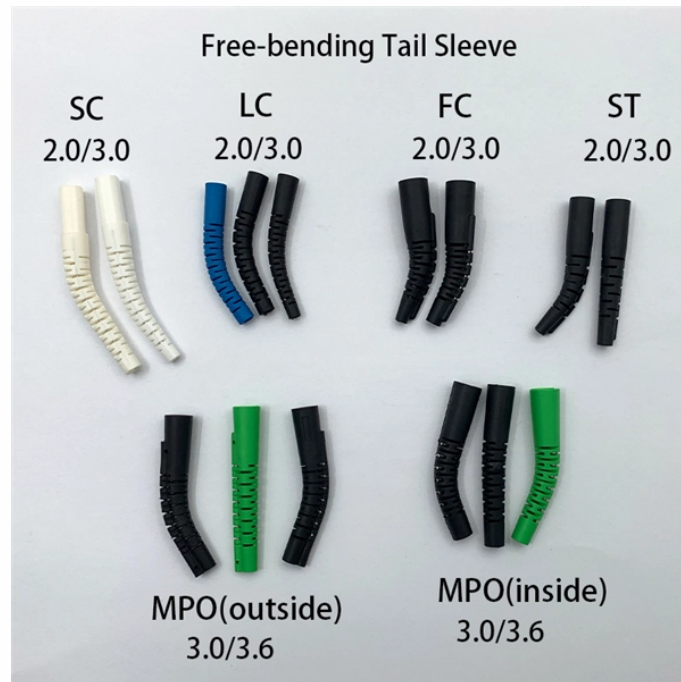


Cable tray specifications models and thickness standards table



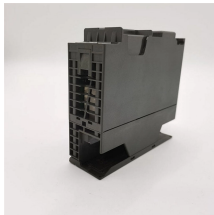
Cable tray specifications models and thickness standards table



Explore standard sizes by tray type, understand width and depth limits, and see how to calculate and choose compliant cable tray sizes for real projects.



Steel cable trays are fabricated from continuous roll-formed structural quality steel. By roll-forming steel, the mechanical properties are increased allowing the use of a lighter gauge steel to carry the ...



Hubbell's NEXTFRAME® Ladder Tray is the effective and widely used cable runway that supports and delivers bundles of cable between cabinets, racks, and closets, along walls, and suspended from ...



The work covered under this section consists of the furnishing of all necessary labor, supervision, materials, equipment, tests and services to install complete cable tray systems as shown on the ...



Explore standard sizes by tray type, understand width and depth limits, and see how to calculate and choose compliant cable tray sizes for real projects.



The load-bearing capacity of cable tray systems is directly related to their electrical cable tray dimensions, material thickness, and support spacing. Manufacturers publish load rating tables ...



This document provides specifications for perforated and solid cable tray systems including:
- Straight sections that come in various heights, bottom types, return flange types, materials, thicknesses, and ...



The Canadian Electrical Code, which publishes standards for electrical applications. Articles 12-2200 to 12-2210 cover various aspects of cable tray systems. association representing the major electrical ...



Cable Trays are designed to meet most requirements of cable and electrical wire installations and comply to local and international standards of fabrications and finishes.



NEMA VE 1-2017 Specifies requirements for metal cable trays and associated fittings designed for use in accordance with the rules of Canadian Electrical Code, Part I and the National Electrical Code®



Coupler Plate Used to join two cable trays in a straight line, ensuring proper alignment and structural continuity.

Contact Us

For more information, pricing, or custom network solutions, please contact us:

Website: <https://hashherbcafe.co.za>

Email: hello@hashherbcafe.co.za

Phone: +27 63 814 7295

Address: 15 Galaxy Road, Linbro Business Park, Johannesburg, 2065, South Africa

This document is for informational purposes only. Specifications subject to change without notice.

