






## Cable tray set quota



## Cable tray set quota

 <p>Rear of the optical fiber distribution box</p>	<p>Enter the dimensions of the cable tray, the desired fill ratio, and the diameter of the cables to calculate the cable tray capacity. This calculator helps determine the maximum number of cables ...</p>
	<p>The cable tray calculator determines the required tray width and type based on the number and size of cables to be installed, ensuring adequate fill levels and derating compliance.</p>
	<p>This guide covers the cable tray types and their appropriate applications, the fill rules for each configuration, ampacity derating requirements, separation of power and signal cables, and the ...</p>
	<p>The NEC rule requires that the cable cross-sectional areas together may not exceed 50% of the tray area (width x depth = fill). Cables will nearly completely fill the cable tray when reaching the 50% ...</p>
	<p>Calculate cable tray sizing and fill capacity based on tray dimensions, cable diameter, number of cables, and maximum fill percentage per electrical code. Determine whether cables fit within safe fill limits.</p>



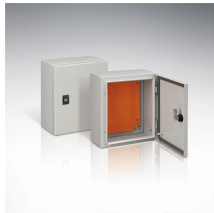
Properly sizing your cable tray is critical for safety and compliance. Our free calculator helps you determine the correct tray size based on NEC and IEC standards.



The right cable tray sizing calculator helps engineers turn cable schedules into a verified tray width and fill check before material ordering and site installation.



Ensure your cable runs meet NEC safety standards with our Cable Tray Fill Calculator. Calculate fill ratios for CAT6, Power, and Fiber cables to ...



Cable capacity in a tray is calculated by determining the maximum allowable fill area (e.g., 40% of the tray's total area for power cables) and confirming that the total cross-sectional area of all cables does ...



Select your tray type (ladder, ventilated trough, solid bottom, or channel), enter the tray width and usable depth, then add cables by size and quantity. The calculator computes the total cable cross-sectional ...



Ensure your cable runs meet NEC safety standards with our Cable Tray Fill Calculator. Calculate fill ratios for CAT6, Power, and Fiber cables to prevent overheating and inspection failures.

## Contact Us

For more information, pricing, or custom network solutions, please contact us:

Website: <https://hashherbcafe.co.za>

Email: [hello@hashherbcafe.co.za](mailto:hello@hashherbcafe.co.za)

Phone: +27 63 814 7295

Address: 15 Galaxy Road, Linbro Business Park, Johannesburg, 2065, South Africa

This document is for informational purposes only. Specifications subject to change without notice.

