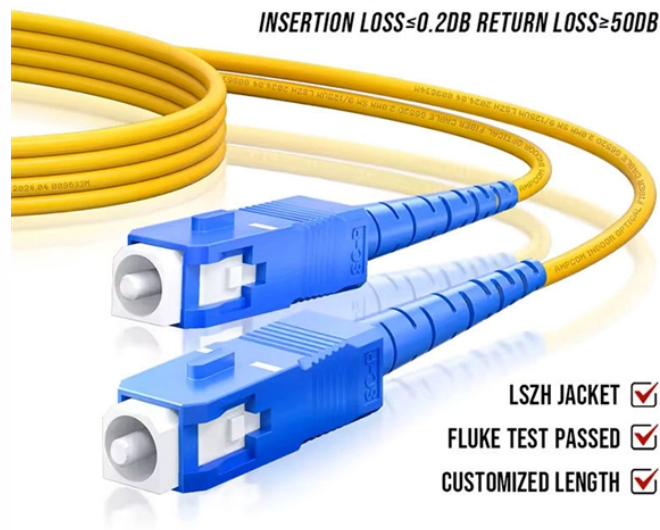





Cable tray length redundancy factor





Cable tray length redundancy factor

	<p>Explore standard sizes by tray type, understand width and depth limits, and see how to calculate and choose compliant cable tray sizes for real projects.</p>
-----------------------------------------------------------------------------------	------------------------------------------------------------------------------------------------------------------------------------------------------------------

	<p>Explore standard sizes by tray type, understand width and depth limits, and see how to calculate and choose compliant cable tray sizes for real projects.</p>
-----------------------------------------------------------------------------------	------------------------------------------------------------------------------------------------------------------------------------------------------------------

	<p>Our cable tray fill calculator is designed for designers to compute the appropriate size and capacity of cable trays. You need to install 50 power cables, each with a diameter of 0.5 inches, in a 4-inch deep cable tray.</p>
-------------------------------------------------------------------------------------	------------------------------------------------------------------------------------------------------------------------------------------------------------------------------------------------------------------------------------

	<p>In your case, have a look at IEC 60287-2-2. The long and the short of it is that the ratio of the vertical spacing (e) to the external diameter of the largest cable (D_e) needs to be greater than 4 ...</p>
-------------------------------------------------------------------------------------	--------------------------------------------------------------------------------------------------------------------------------------------------------------------------------------------------------------------------------------------

	<p>For ladder or ventilated trough trays, the total sum of the cross-sectional areas of all the cables to be installed in the cable tray must be equal to or less than the allowable cable area for the tray width, as ...</p>
-------------------------------------------------------------------------------------	--------------------------------------------------------------------------------------------------------------------------------------------------------------------------------------------------------------------------------



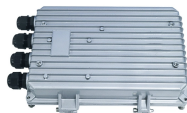
The design and cost of the cable tray is greatly affected by this designation. In order to determine the most appropriate and economical system, a class should be selected that reflects the actual total ...



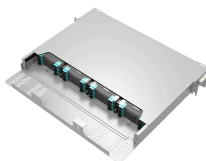
Cable tray size calculation is important for ensuring safe cable installation, proper heat dissipation, and enough spare capacity for future expansion. In this guide, you will learn how to ...



Cable Tray Technical Guide A practical guide to product selection and installation This guide for engineers and installers has been developed by ABB as a practical reference regarding cable tray ...



This guide covers the cable tray types and their appropriate applications, the fill rules for each configuration, ampacity derating requirements, separation of power and signal cables, and the ...



When fitting cable trays and their accessories, the products are cut on site to create changes of direction, adjust sections, etc. Damage can also occur during handling; as a result, both the ...



Cable Tray is sized based on the number and type of cables required for the current and future need. A 50% fill ratio should equal the maximum number of cables pulled in a given cross section.

Contact Us

For more information, pricing, or custom network solutions, please contact us:

Website: <https://hashherbcafe.co.za>

Email: hello@hashherbcafe.co.za

Phone: +27 63 814 7295

Address: 15 Galaxy Road, Linbro Business Park, Johannesburg, 2065, South Africa

This document is for informational purposes only. Specifications subject to change without notice.

