

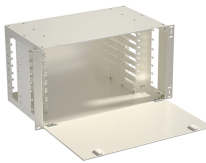
Cable tray hole closing



Cable tray hole closing



Enjoy the videos and music you love, upload original content, and share it all with friends, family, and the world on .



How do you seal a cable entry hole? This guide covers how to properly seal cable entry holes, what products you need and why it is an important thing to do.



The mounting drawings of the screw-on cable tray systems show either perforated or unperforated cable trays. All the connectors, fittings and accessories shown can be mounted on both perforated and ...



The Roxtec HD 32 (High Density) is a corrosion resistant cable entry seal for sealing and terminating up to 32 cables in one single cut out in junction and terminal boxes.



Whether you're new to the world of cable management or looking to upgrade your current setup, this beginner's guide will explain everything you need to know about cable entry seals.



Cable Runway Wall Angle Support fastens ladder rack to a wall or other flat surface. This Wall Angle Support, LWASK24BLK item fits 24.00 with a material of Steel color Black.



Our cable entry seals are available in standard and threaded types, have factory-applied adhesive, and can accommodate single or multiple cables up to 2.5 inches in diameter.



A simple and effective solution would be “Sleeve Systems.” where cable trays are stopped a few feet short of the fire barrier, a sleeve installed and the tray picked up again on the other side of the barrier.



Cable tray length is selected based on the load to be supported, the distance between the supports (also referred to as the span), and handling and installation constraints.

FTTH BOOK-TYPE TERMINAL BOX
Sleek Design. Reliable Connectivity.



COMPACT & DURABLE EASY INSTALLATION

Choose from our selection of cable tray accessories, including cable and hose trays, steel formable cable and hose trays, and more. Same and Next Day Delivery.



Instead of large conduits, cable channel may be used very effectively to support cable drops from the cable tray run to the equipment or device being serviced and is ideal for cable tray runs involving a ...

Contact Us

For more information, pricing, or custom network solutions, please contact us:

Website: <https://hashherbcafe.co.za>

Email: hello@hashherbcafe.co.za

Phone: +27 63 814 7295

Address: 15 Galaxy Road, Linbro Business Park, Johannesburg, 2065, South Africa

This document is for informational purposes only. Specifications subject to change without notice.

