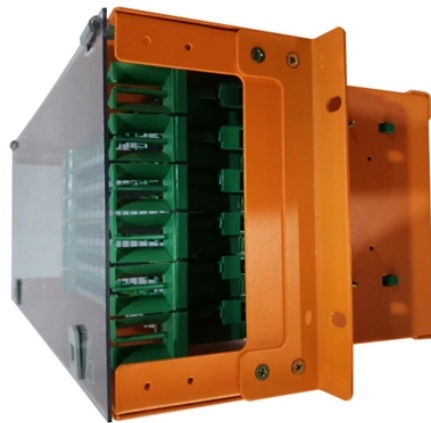


Cable tray elbow sealing

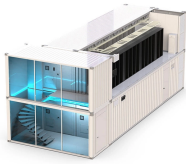


Overview

WSP weatherstops are designed to seal penetrations of any type in walls or floors by cable tray, cable conduit, pipe and/or bus duct. The WSP system utilizes a powder coated or galvanized steel fram.



Cable tray elbow sealing



Please click the appropriate link below to view the catalog section as a PDF.



The frame can be opened and closed repeatedly to allow for cable maintenance and additions. The sponge rubber pads are compressed around the penetrating items and can be easily cut to fit around ...



TechLine Mfg. manufactures long radius elbow fittings to enhance ease of use for Snap Track cable tray systems. These are available in vertical inside, vertical outside and horizontal configurations.



Seal cable penetrations with our modular firestop solutions, designed to create water-, smoke- and gas-tight barriers in energy and industry projects both onshore and offshore.



Its innovative two-part design installs easily around non-compliant cable tray penetrations, rapidly restoring fire resistance. Ideal for retrofit environments, the EZ Path Cable Tray Retrofit Device ...



Manufacturer of cable, pipe penetration, and sealing transit products suitable for explosion, pressure, and fire protection. Products include corrosion-resistant frames, insert blocks, cable and ...



With just one Roxtec entry seal for high cable density applications, ...



With just one Roxtec entry seal for high cable density applications, you can replace more than 30 conventional cable glands and be sure to have a sealed cable entry. You can even install the ...



Cable Tray Penetration Seals provide a barrier between rooms protecting equipment from smoke and fire. Materials allow for future cable pulling and routing. Ability to remove penetration seals for cable ...



FIRSTO firestops are designed to seal multi-cable and cable tray penetrations of fire-rated walls and floors. FIRSTO fire stops are developed as a modular system which is simple to assemble around ...



In many areas on the west coast, there are seismic considerations when a cable tray is passed through a fire wall. If a cable tray is rigidly routed through a fire barrier and an earthquake occurs, the seal will ...

Contact Us

For more information, pricing, or custom network solutions, please contact us:

Website: <https://hashherbcafe.co.za>

Email: hello@hashherbcafe.co.za

Phone: +27 63 814 7295

Address: 15 Galaxy Road, Linbro Business Park, Johannesburg, 2065, South Africa

This document is for informational purposes only. Specifications subject to change without notice.

