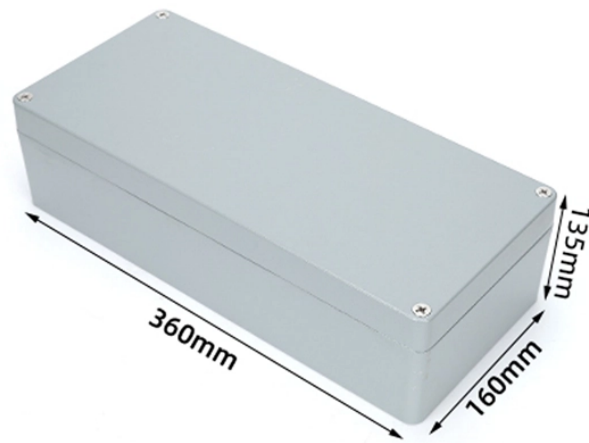


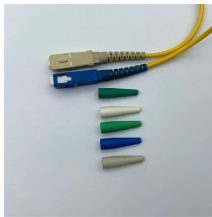
# Cable tray bottom width coefficient



## Cable tray bottom width coefficient



Explore standard sizes by tray type, understand width and depth limits, and see how to calculate and choose compliant cable tray sizes for real projects.



The right cable tray sizing calculator helps engineers turn cable schedules into a verified tray width and fill check before material ordering and site installation.



For ladder or ventilated trough trays, the total sum of the cross-sectional areas of all the cables to be installed in the cable tray must be equal to or less than the allowable cable area for the tray width, as ...



Explore standard sizes by tray type, understand width and depth limits, and see how to calculate and choose compliant cable tray sizes for real projects.



When fitting cable trays and their accessories, the products are cut on site to create changes of direction, adjust sections, etc. Damage can also occur during handling; as a result, both the ...



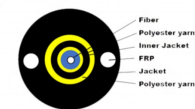
The construction and outside diameter of the smallest cable will usually determine either the rung spacing or the type of construction for the bottom of the tray.



The design and cost of the cable tray is greatly affected by this designation. In order to determine the most appropriate and economical system, a class should be selected that reflects the actual total ...



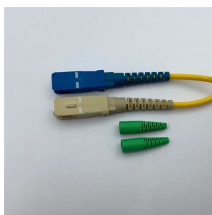
Cable tray length is selected based on the load to be supported, the distance between the supports (also referred to as the span), and handling and installation constraints.



Solid bottom cable tray: The total combined diameters of the cables should not exceed 90% of the available width of the cable tray. This ensures adequate space for cable placement, reduces the risk ...



The cable tray calculator determines the required tray width and type based on the number and size of cables to be installed, ensuring adequate fill levels and derating compliance.



Shallow trays of 50mm or less are limited to single-layer cable arrangements with small-diameter cables, while 100mm or deeper trays can accommodate multiple layers or large-diameter ...

## Contact Us

For more information, pricing, or custom network solutions, please contact us:

Website: <https://hashherbcafe.co.za>

Email: [hello@hashherbcafe.co.za](mailto:hello@hashherbcafe.co.za)

Phone: +27 63 814 7295

Address: 15 Galaxy Road, Linbro Business Park, Johannesburg, 2065, South Africa

This document is for informational purposes only. Specifications subject to change without notice.

