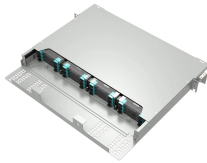


Cable tray angle steel bracket installation cable tray



Cable tray angle steel bracket installation cable tray



The Legrand Cablofil bracket for C-profile rail and wire mesh cable tray, steel, sendzimir galvanized, CAT 30 GS CM586050 is a well-designed fastening solution for the safe and quick installation of ...



Shop Cable Tray Fitting, Wall Angle Support Kit, Steel, 30 In., 32 X 2 X 2 In, 30 In, 2 In. H, 2 In L, 32 In. W By Chatsworth (11421-730) At Graybar, Your Trusted Resource For Cable Tray Fittings And Other ...



They can be easily mounted on ladder-type cable trays or framing channel struts without cumbersome mounting brackets. Our industry-leading interlocking frame, with its captive stainless steel gripping ...



Learn about the different types of cable tray support, including rod supports and angle steel supports, and how to choose the right one for your electrical installation needs. Discover key ...



This document provides installation guidelines for cable trays, including: 1) Cable trays come in perforated and ladder types, with perforated trays made of steel ...



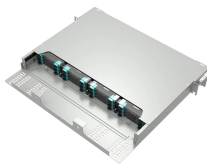
A professional guide to installing electrical cable tray systems per NEC Article 392. Covers support, securing cables, and fill calculations.



A practical guide to product selection and installation This guide for engineers and installers has been developed by ABB as a practical reference regarding cable tray characteristics, installation, and ...



A cable tray system is used to support insulated electrical cables used for power distribution, control, and communication. Cable trays are used as an alternative to open wiring or electrical conduit ...



Choose from our selection of cable tray mounting brackets in a wide range of styles and sizes. Same and Next Day Delivery.



Cable Runway Wall Angle Support fastens ladder rack to a wall or other flat surface. This Wall Angle Support, LWASK24BLK item fits 24.00 with a material of Steel color Black.



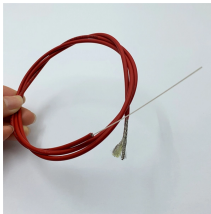
Choose from our selection of cable tray supports in a wide range of styles and sizes. Same and Next Day Delivery.



Installation Complexity: Installing cable tray support brackets at an angle involves additional complexity compared to horizontal or vertical installations. It may require careful planning, specialized tools, and ...



Refers to the approximate height of a cable tray used for specifying. Selecting a specific height will show cable trays with that height, as well as cable tray accessories compatible with that height.



Cable Tray Adjustable Angle Bracket LB3 brackets can be used for mounting lighting units at adjustable angles and are fixed to both the sidewall and the base of the ...

Contact Us

For more information, pricing, or custom network solutions, please contact us:

Website: <https://hashherbcafe.co.za>

Email: hello@hashherbcafe.co.za

Phone: +27 63 814 7295

Address: 15 Galaxy Road, Linbro Business Park, Johannesburg, 2065, South Africa

This document is for informational purposes only. Specifications subject to change without notice.

