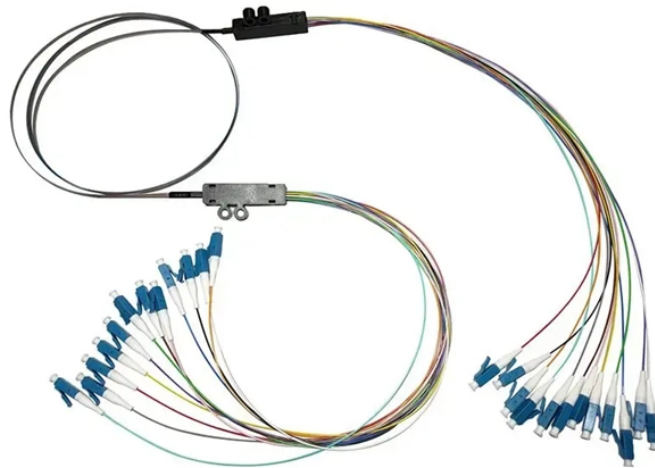


Cable tray anchor bolt maintenance



Overview

To prevent loosening, regular inspections and maintenance are essential. It's also recommended to use anti-loosening mechanisms, such as lock washers or locking nuts, at critical joints to prevent future. The following pages address the 2014 National Electrical Code® requirements for cable tray systems as well as design solutions from practical experience. The information has been organized for use as a reference guide for both those unfamiliar and those experienced with cable tray. Nearly every, en completely installed, without damage either to conductors or structural system use maintain spacing or to keep cables in place when the tray is ect the minimum bend ra-dius for cables as they exit the bottom of the cable tray. Cable trays support cables across open spans in the same way that roadway bridges support traffic. Cable trays can provide a safe component of a power, low voltage. Cable tray failures can cause operational disruptions, equipment damage, and safety risks. This guide discusses common cable tray problems, from loosening and corrosion to grounding issues and installation errors, along. Quest offers couplers for joining all Quest Cable Trays. Color Length. Quest offers a coupler for toolless connection of angles.

Cable tray anchor bolt maintenance



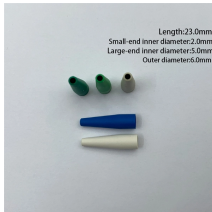
However, like any other mechanical equipment, cable trays require regular maintenance and inspection to ensure their safe and reliable operation. In this article, we will discuss the best ...



NEMA Standard VE 2-2006 addresses shipping, handling, storing, and installing cable tray systems; it also provides information on cable tray maintenance and system modification.



Under normal conditions, visual maintenance should be considered sufficient. Visual checks should be made at all points of connection to ensure fixings & fastenings are sound. Any suspect areas should ...



CABLE TRAY ANCHOR BOLT EXPANSION SCREWS
Anchor Bolt Expansion Screw for Quest Cable Tray. To complete any configuration of wire mesh cable tray, hardware such as...



Under normal conditions, visual maintenance should be considered sufficient. Visual checks should be made at all points of connection to ensure fixings & fastenings are sound. Any suspect areas should ...



Proper cable tray fixing is crucial for maintaining system stability, reducing cable stress, and extending the life of your electrical installations.



To prevent loosening, regular inspections and maintenance are essential. Tighten any loose bolts or fasteners, and replace any damaged components. It's also recommended to use anti ...



These documents: ANSI/NEMA VE-1, Metal Cable Tray Systems; NEMA VE-2, Cable Tray Installation Guidelines; and NEMA FG-1, Non Metallic Cable Tray Systems, are an excellent industry resource in ...



Cable tray length is selected based on the load to be supported, the distance between the supports (also referred to as the span), and handling and installation constraints.



Regular maintenance of cable trays is an important measure to ensure their safe and stable operation. The following are detailed steps and precautions for regular maintenance..

Contact Us

For more information, pricing, or custom network solutions, please contact us:

Website: <https://hashherbcafe.co.za>

Email: hello@hashherbcafe.co.za

Phone: +27 63 814 7295

Address: 15 Galaxy Road, Linbro Business Park, Johannesburg, 2065, South Africa

This document is for informational purposes only. Specifications subject to change without notice.

