

Cable tray 300 specification



Cable tray 300 specification



The Ladder Tray features light, rugged, tubular steel construction. It is designed for mechanical support and strain relief in long runs of cable and creates a smooth gradual bend for cable. Rail and stringer ...



Cablofil CF54/300BL 2X12 Cable Tray Technical Description: Wire Mesh Type; Carbon Steel Material; Black Painted Finish; 10 ft; 12 Inch; 2 Inch; UL Approval; Welded Process; ASTM A510 Material ...



- OUTDOOR CABINET
- OUTDOOR CABINET WITH AIR CONDITIONING
- OUTDOOR ENERGY STORAGE CABINET
- TRAY

Specification sheet for Cablofil CF105 wire mesh cable trays with 4-inch side rails. Features tray sizes of 750mm and 900mm, detailed dimensions, finishes, and compliance with ...



Typical 300 volt insulated multiconductor instrumentation tray cables (ITC) and power limited tray cables (PLTC) cost the same for both cable tray and conduit wiring systems.



Our cable tray design considerations guide details key factors to consider when designing cable tray systems for industrial and commercial applications. Browse or download the cable tray catalog for ...



Explore standard sizes by tray type, understand width and depth limits, and see how to calculate and choose compliant cable tray sizes for real projects.



3 standard designs of cable tray to suit individual applications Hole pattern designed to provide maximum flexibility for positioning cable ties without compromising ...



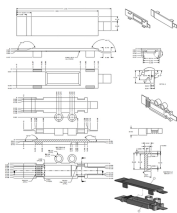
NEMA VE 1-2017 Specifies requirements for metal cable trays and associated fittings designed for use in accordance with the rules of Canadian Electrical Code, Part I and the National Electrical Code®



Cable tray installed in a hazardous location must contain only those cables that are appropriate for this type of environment as defined in Chapter 5 of the NEC.



The SRWB12410STR6 is a straight section measuring 3000 millimeters long, but you can cut it with side-action bolt cutters to fit your custom specifications. It also measures 300 millimeters wide and ...



FDG CABLE TRAY ng; Power, Data, and Audio Visual. A quick and easy system to install without the need for specialised tools or equipment, makes it a first choice for Comm solution that works for your ...

Contact Us

For more information, pricing, or custom network solutions, please contact us:

Website: <https://hashherbcafe.co.za>

Email: hello@hashherbcafe.co.za

Phone: +27 63 814 7295

Address: 15 Galaxy Road, Linbro Business Park, Johannesburg, 2065, South Africa

This document is for informational purposes only. Specifications subject to change without notice.

