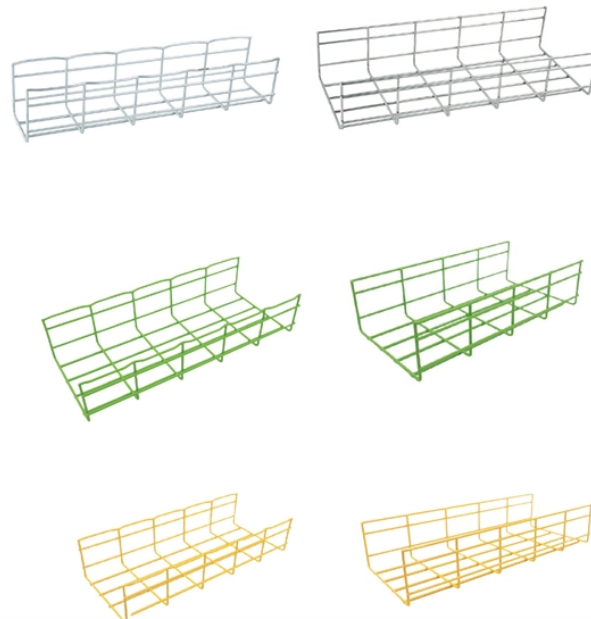


## Cable Trays and Buried Installation



### Overview

Tray cables can be buried underground, but only if they are specifically designed and rated for direct burial. The B-Line series Cable Tray Manual was produced by our technical staff. The following pages address the 2014 National Electrical Code® requirements for cable tray systems as well as design. MP Husky Cable Trays are NEMA VE 2-2013 compliant. NEMA VE2 was developed by the NEMA Cable Tray Section, of which MP Husky is a charter member. This publication is a collection of items of general information related to the subject of power cable. We want each and every experience with our. Electrical cable work involves installing, maintaining, and terminating cables that transport electricity, requiring knowledge of conductors, insulation, safety (like de-energizing circuits), and proper techniques for routing, sizing (based on current/power), and connecting component.

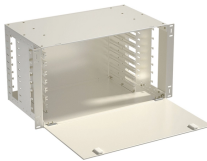
## Cable Trays and Buried Installation



Direct burial cables are designed specifically for underground environments—no conduit required. This article explains what direct burial cables are, when to use them, and the benefits they offer, along ...



These documents: ANSI/NEMA VE-1, Metal Cable Tray Systems; NEMA VE-2, Cable Tray Installation Guidelines; and NEMA FG-1, Non Metallic Cable Tray Systems, are an excellent industry resource in ...



Whether you're running fiber for a campus network or laying conduit for landscape lighting, this guide cuts through the confusion with field-tested strategies. Imagine tossing cables directly into the earth ...



Because the tension entering the cable tray is rarely zero, it is critical that the tension required to remove the cable from the reel be used to calculate the total tension for the installation.



This article explains when and how tray cables can be buried underground, the necessary ratings and standards, installation best practices and essential compliance considerations.



This document provides information on installing medium voltage underground cables. It discusses several methods of installation, including directly burying cables in trefoil or flat formation, pulling ...



We have more than a decade's worth of experience making and designing quality cable tray and cable management systems. Our knowledgeable production team works closely with each customer to ...



The placement of cables, ducts, and conduits can be done using cable trays - for both outside plant (OSP) and interior spaces (ISP). This allows cables and ducts to be installed quickly and readily ...



Electrical cable work involves installing, maintaining, and terminating cables that transport electricity, requiring knowledge of conductors, insulation, safety (like de-energizing circuits),...

Mesh door/glass door optional



Sp-601 glass door Sp-602 mesh door

Learn everything about cable tray installation with our complete guide. Discover types, steps, and safety tips for efficient electrical cable management.



Proper planning for installing cable tray includes calculations based on loading, support systems, cable/wire fill and spacing, conductor types, securing of the cables and wire, and proper grounding ...

## Contact Us

For more information, pricing, or custom network solutions, please contact us:

Website: <https://hashherbcafe.co.za>

Email: [hello@hashherbcafe.co.za](mailto:hello@hashherbcafe.co.za)

Phone: +27 63 814 7295

Address: 15 Galaxy Road, Linbro Business Park, Johannesburg, 2065, South Africa

This document is for informational purposes only. Specifications subject to change without notice.

