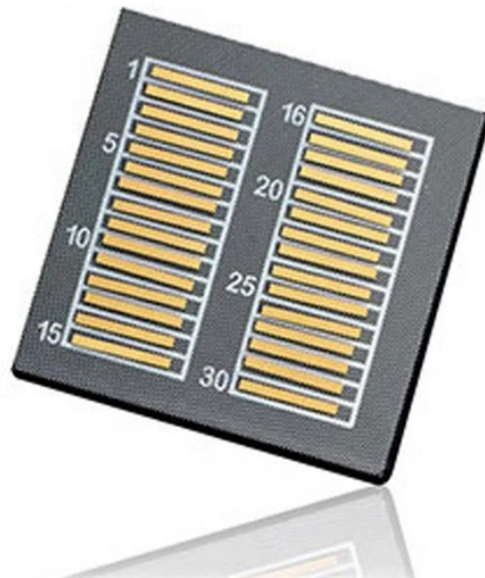


## CN2 optical cable



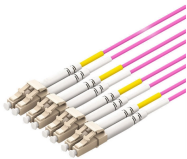
## CN2 optical cable



Pricing (USD) Filter the results in the table by unit price based on your quantity. Headers & Wire Housings DIP PLG 16 POS. GOLD. Headers & Wire Housings DIP PLG 16 POS. GOLD. A tariff of ...



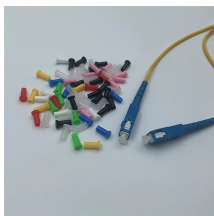
The fiber optic duplex patch cable with LC PC to SC PC connectors is designed for OS2 single-mode applications. With an I-VH 2E specification and a fiber diameter of 9/125 $\mu$ , it enables low-loss data ...



Optical fiber cable with a single-mode cord assembly type connector for outdoor use with excellent weather resistance. The lineup includes 3 types of connectors: SC, FC, and ST.



At a wavelength of 850nm, it has been programmed, uniquely serialized, and data-traffic and application tested to ensure it is 100% compliant and functional. This active optical cable is TAA (Trade ...



Specialty Networks About Us Corning Optical Communications Corning Inc. Business Segments Sustainability Investor Relations Newsroom Supply Chain Social Responsibility Supplier ...



This active optical cable is TAA (Trade Agreements Act) compliant, and is built to comply with MSA (Multi-Source Agreement) standards. We stand behind the quality of our products and proudly offer a ...



CommScope designs and manufactures a comprehensive line of fiber optic cables—from outside plant to indoor/outdoor and fire-rated indoor fiber cables.



OmniCable's complete fiber optic inventory includes custom fiber optic cable cutting, expert kitting, and value-added technical support tailored to your business. Whether you need fiber optic cable suppliers ...



Residential Delivery - A residential delivery charge applies to shipments to a home or private residence, including locations where a business is operated from a home, or to any shipment in which the ...

## Contact Us

For more information, pricing, or custom network solutions, please contact us:

Website: <https://hashherbcafe.co.za>

Email: [hello@hashherbcafe.co.za](mailto:hello@hashherbcafe.co.za)

Phone: +27 63 814 7295

Address: 15 Galaxy Road, Linbro Business Park, Johannesburg, 2065, South Africa

This document is for informational purposes only. Specifications subject to change without notice.

