

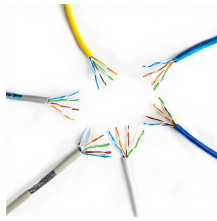
## Burkina Faso QSFP Optical Module 1G



## Burkina Faso QSFP Optical Module 1G



You can choose optical modules as needed for data transmission over optical fibers. The optical modules include optical transmitters, optical receivers, transceivers, and transponders.



This essential guide covers the difference between SFP, SFP+, and QSFP, explains speed classifications (1G, 10G, 400G), and details key buying factors like DOM and third-party ...



Where can I buy QSFPTEK Gigabit SFP Module,1000BASE-LX/LH 1310nm 10km DDM Single-Mode LC Mini-GBIC Transceiver for Cisco GLC-LH-SMD/GLC-LX-SM-RGD, Ubiquiti UF-SM-1G, Netgear, ...



Shop high-speed optical transceivers from Unitekfiber. We offer 100% compatible 40G, 100G, and 400G QSFP-DD modules for data centers. Expert technical ...



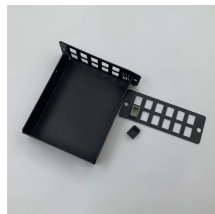
Cisco Transceiver Modules - Learn product details such as features and benefits, as well as hardware and software specifications.



By partnering with tier-1 optical component manufacturers, we ensure every module meets the highest industry standards. Each transceiver undergoes rigorous testing and comes supported by a Limited ...



QSFP modules employ various optical connector types depending on the application and reach requirements. The mechanical interface must ensure proper fiber alignment and minimize ...



Shop high-speed optical transceivers from Unitekfiber. We offer 100% compatible 40G, 100G, and 400G QSFP-DD modules for data centers. Expert technical support & wholesale pricing.



The QSFP-10002-FR1 is a single lambda short reach single-mode 100G QSFP28 optical module transceiver compatible with the 100GBase-FR1 specifications. It uses a single 1310nm EML laser at ...



All interface speeds, from 1G to 400GE have connectivity options that include Direct Attach copper Cables (DACs), Active Optical Cables (AOCs), multi-mode fiber and single-mode fiber transceivers.



Store.QSFPTEK 1G SFP transceivers provide wide selection for various Gigabit Ethernet applications, such as 100+ vendors compatibility, copper/fiber, SMF/MMF, 100m to 80km.

## Contact Us

For more information, pricing, or custom network solutions, please contact us:

Website: <https://hashherbcafe.co.za>

Email: [hello@hashherbcafe.co.za](mailto:hello@hashherbcafe.co.za)

Phone: +27 63 814 7295

Address: 15 Galaxy Road, Linbro Business Park, Johannesburg, 2065, South Africa

This document is for informational purposes only. Specifications subject to change without notice.

