

## Both the fiber optic cable and the router have red dots



### Overview

Don't panic—in this step-by-step guide, I'll walk you through all the proven fixes, from simple reboots to checking your fiber line, to get your internet connection back online as quickly as possible. □□ What the LOS/OPTICAL Red Light Means: • **Blinking Red:** No signal detected from. Whether your modem is blinking orange, your router has a solid red light, or you are staring at a mysterious "DS" indicator, you will find the answer below. A solid green or white light on your modem or router almost always means everything is working normally. However, when it blinks red or stays solid red, it signifies a Loss of Signal, a problem preventing your router from communicating. Fiber optic networks are celebrated for their speed and reliability, but even the best systems can encounter problems. When issues like signal loss, slow speeds, or intermittent connectivity arise, systematic troubleshooting is key. Fortunately, there are heaps of ways to fix a red blinking light on your router.

## Both the fiber optic cable and the router have red dots



This guide will walk you through what the LOS light means, why it blinks red and step-by-step instructions on how to resolve the issue, including resetting your router.

LoRawan outdoor base station



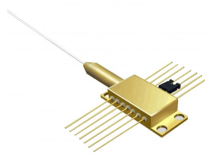
A red light on your modem typically means it can't detect an internet signal and can't connect. To fix this issue, you'll need to go through several troubleshooting steps.



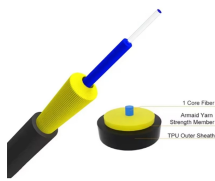
To troubleshoot this, try using a different Ethernet cable, check the connection on the device, and verify the network settings on both the router and the device.



Different factors can cause your router's red light to blink. This can be due to a misconfiguration, a loose cable connection, outdated firmware, a service outage, or other issues.



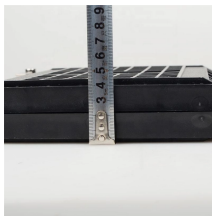
Normally provided on optical network terminals (ONT), this red light indicates that the unit is not receiving a signal from your fiber internet provider's Passive Optical Network (PON).



Don't panic—in this step-by-step guide, I'll walk you through all the proven fixes, from simple reboots to checking your fiber line, to get your internet connection back online as quickly as ...



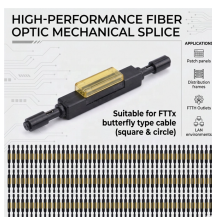
Learn how to troubleshoot fiber networks. Identify common issues like high loss, dirty connectors, and signal drops, with practical solutions for optical links.



A red light on a router usually means the device has lost its internet connection or is experiencing a hardware issue. First, check whether your modem is also showing abnormal lights.



This guide will walk you through what the LOS light means, why it blinks red and step-by-step instructions on how to resolve the issue, including ...



How to Fix Red Light on My Router A red light on your router can be a source of frustration and confusion. It often indicates that something is wrong with your internet connection or ...



A red or blinking PON light almost always indicates a physical issue with the fiber cable: a bend, a break, a disconnected connector, or debris on the optical connector face.

## Contact Us

For more information, pricing, or custom network solutions, please contact us:

Website: <https://hashherbcafe.co.za>

Email: [hello@hashherbcafe.co.za](mailto:hello@hashherbcafe.co.za)

Phone: +27 63 814 7295

Address: 15 Galaxy Road, Linbro Business Park, Johannesburg, 2065, South Africa

This document is for informational purposes only. Specifications subject to change without notice.

