

Bolivia Agent for Single-Fiber Bidirectional 10G



Overview

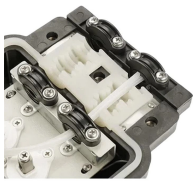
Providing robust 16 dB link budget over 40km single-mode fiber, this 10G BiDi module reduces infrastructure costs while maintaining performance. Supporting multi-rate transmission from 1. 32 Gbps, perfect for metro and regional networks requiring long-distance. In addition, BiDi is compatible with any SFP, 1G/10G/25G/40G/100G/400G rates. What is a BiDi transceiver?

The main difference between BiDi transceivers and traditional two-fiber transceivers is that the former are fitted with wavelength division multiplexing (WDM) couplers, also known as diplexers. A broad range of industry-compliant SFP+ modules for 10 Gigabit Ethernet deployments in diverse networking environments. Understanding the correct. The SFP+ transceiver supports up to 10km over OS2 SMF via an LC simplex connector. SFP-10G-BX40D-I. The GIGALIGHT's 10G BiDi SFP+ series of optical transceiver modules are widely used in 10G Ethernet and Optical Transport Networks (OTN OTU2e), and are compatible with 10G CPRI, Synchronous Optical Networks (SONET OC-192 / SDH STM-64), and 10G Fibre Channel, with transmission distances ranging from.

Bolivia Agent for Single-Fiber Bidirectional 10G



BiDi modules deliver a powerful approach to fiber savings and cost reductions through full-duplex communication over a single fiber strand. BiDi ...



This category includes all types of SFP+ 10G transceivers for 10G rate data connections over one strand of SMF, BiDirectional operation (two wavelengths on same fiber).



SFP+ BiDi transceivers are specifically engineered to support 10 Gigabit Ethernet deployments. The most commonly used wavelength combination for 10G SFP+ BiDi transceivers is 1270nm/1330nm, ...



Not only does it use less power, but it also sends and receives data on just one ...



A SFP-10G-BX40D-I device is always connected to a SFP-10G-BX40U-I device with a single strand of standard SMF with an operating transmission range up to 40 ...



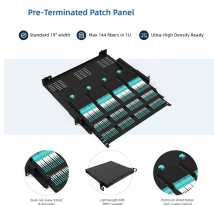
RAD's BiDi QSFP adaptor is a passive, small-factor dual to single fiber adapter that can be plugged into existing SFPs, providing immediate savings for 1G, 10G, 100G, and 200G fiber infrastructure. There ...



Providing robust 16 dB link budget over 40km single-mode fiber, this 10G BiDi module reduces infrastructure costs while maintaining performance. Supporting multi-rate transmission from 1.25 to ...



Not only does it use less power, but it also sends and receives data on just one fiber, cutting down on fiber costs and making deployment smoother. I tested its transmission quality after buying it, and it ...



10G SFP+ BiDi 10-80km Single-fiber Bidirectional Transceiver Module (Industrial Grade Optional)



A SFP-10G-BX40D-I device is always connected to a SFP-10G-BX40U-I device with a single strand of standard SMF with an operating transmission range up to 40 km. The ...



BiDi modules deliver a powerful approach to fiber savings and cost reductions through full-duplex communication over a single fiber strand. BiDi modules are compatible with existing ...



A SFP-10G-BX40D-I device is always connected to a SFP-10G-BX40U-I device with a single strand of standard SMF with an operating transmission range up to 40 km. The communication over a single ...



By the end of this guide, you will gain practical insights into selecting, implementing, and maintaining SFP-10G-BXD-I modules for reliable 10G single-fiber links.

Contact Us

For more information, pricing, or custom network solutions, please contact us:

Website: <https://hashherbcafe.co.za>

Email: hello@hashherbcafe.co.za

Phone: +27 63 814 7295

Address: 15 Galaxy Road, Linbro Business Park, Johannesburg, 2065, South Africa

This document is for informational purposes only. Specifications subject to change without notice.

