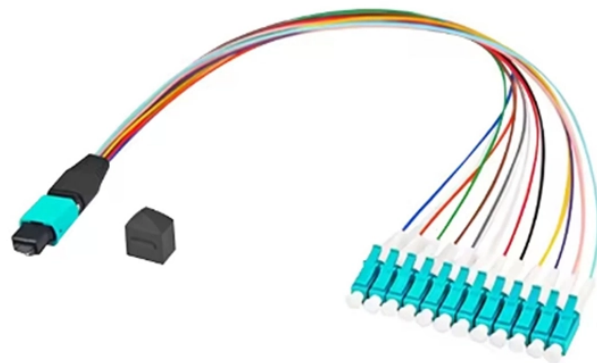


Bolivia 800G Optical Module 100G



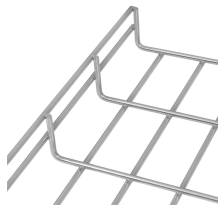
Bolivia 800G Optical Module 100G



The OSFP specification was expanded in 2021 to include support for 800G modules with 100G PAM4 lanes (OSFP800) and increased module power support to support a maximum of approximately 30W ...



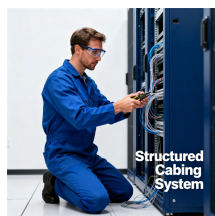
800G optical modules represent the next generation of high-speed data transmission technology, crucial for modern data centers and communication networks. These modules can be ...



This standardized solution for 800G ZR pluggable modules, powered by coherent DSP technology, allows data centers to achieve unprecedented data transmission speeds over distances ...



In this article, we will provide an overview of the various types of 800G optical modules, discuss their applications, and address some FAQs to help you make a better choice when selecting ...



100G to 1.6T Optical Module PHY Product Selection Guide Broadcom's Optical Module PHY portfolio spans multiple technology nodes — 16nm, 7nm and now 5nm, with data rates from 100 Gbs to 1.6 ...



An QSFP (40G or 100G) optical module can be inserted into an OSFP port by using a simple mechanical adapter. This adapter is available from Arista, with part number ADPT-O-Q-100G.



With the continuous growth of network demand, optical modules with different rates have been launched one after another, among which 100G, 400G and 800G optical modules have become ...



This paper describes the technical route of optical communication from 400G to 800G to 1.6T optical modules and compares pluggable and CPO.



This article answers key questions about 800G and 1.6T silicon photonics optical transceivers, covering chip architecture, packaging differences versus EML, performance trade-offs, production challenges, ...



Arista's Optical Modules and Cable portfolio offer a wide variety of high-density and low-power 800G (dual 400G), 400G, 200G, 100G, 50G, 40G, 25G, 10G, 1G, and 100M Ethernet connectivity options ...

Contact Us

For more information, pricing, or custom network solutions, please contact us:

Website: <https://hashherbcafe.co.za>

Email: hello@hashherbcafe.co.za

Phone: +27 63 814 7295

Address: 15 Galaxy Road, Linbro Business Park, Johannesburg, 2065, South Africa

This document is for informational purposes only. Specifications subject to change without notice.

