

Belgian SFP optical module 200G



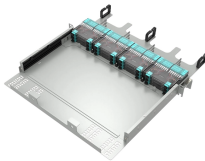
Belgian SFP optical module 200G



The 200g QSFP56 modules produced by SULITON are suitable for most switch brands on the market, such as MSA, Cisco, Huawei, Juniper, Dell, Edge-Core and other switches.



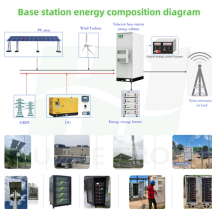
Boost network performance with 200G optical transceivers. Designed for data centers, 5G, and cloud infrastructure, our QSFP56 modules deliver low latency, high reliability, and seamless compatibility.



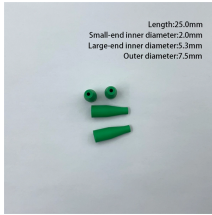
This article will provide a detailed introduction to 200G optical modules and bring you to know this rising star.



200G Transceiver modules come in QSFP56, QSFP-DD form factors to support 200G Ethernet and InfiniBand HDR. QSFP56 is backwards compatible to QSFP28 - tested on ConnectX-6.



Testing Modules & Tools Smart Optical Transceiver BOX GIGALIGHT provides the smart box tools for online coding of SFP, XFP, SFP+, QSFP+, and QSFP28 optics, as well as wavelength tuning for 10G ...



200G QSFP56 optical transceiver is a compact module uses PAM4 modulation technology, which supports four 50G channels. QSFP56 optical transceiver can achieve higher network speeds ...



The 200G QSFP-DD SR8 Transceiver is designed to transmit and receive serial optical data links up to 28 Gb/s data rate (per channel) over multi-mode fiber. It is a small-form-factor hot pluggable ...



It is designed as a small form-factor pluggable (SFP) interface for high-speed networking applications like data centers, enterprise networks, cloud computing, and telecommunications networks.



10Gtek's 200G QSFP56 FR4 transceiver module is designed for use in 200 Gigabit Ethernet links over 2Km single mode fiber. The module has 4 independent electrical input/output channels operating at ...



The QSFP56 200G optical module is a high-performance, low-power fibre-optic communications device that supports data rates up to 200Gbps, ensuring superior performance in ...

Contact Us

For more information, pricing, or custom network solutions, please contact us:

Website: <https://hashherbcafe.co.za>

Email: hello@hashherbcafe.co.za

Phone: +27 63 814 7295

Address: 15 Galaxy Road, Linbro Business Park, Johannesburg, 2065, South Africa

This document is for informational purposes only. Specifications subject to change without notice.

