

# **Belarusian 7-pin laser diode socket**



## Belarusian 7-pin laser diode socket



Quick Laser Loading Looking For Active Cooling? Accessories Easy Wiring DB-9 & DB-15 Interfaces The underside of the mount houses a simple screw terminal wiring setup, with all wires color-coded, and the terminals clearly marked to make wiring the mount for your device as easy as possible. See more on arroyoinstruments Missing: Belarusian Must include: Belarusian Mouser Electronics



We offer a variety of sockets compatible with laser diode packages such as TO-18, TO-46, TO-52, and TO-72. We also provide cable-equipped sockets designed for FCD.



Low noise anode-grounded current driver combined with a TEC controller for laser currents up to 220 mA.



The 203 Butterfly Laser Diode Mount is an excellent choice for electrical connection and passive cooling of Butterfly laser modules. With optional fiber tray, cover, fan base, and removable connectors, the ...



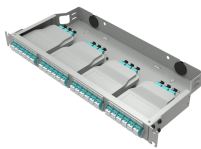
The MLM-7C is designed for 7-PIN « half butterfly » package lasers with RF input modulation connector.



Price is for one 7-pin terminal/socket only. It can fit standard prototyping boards and breadboards which pitch (space) is 0.1 inch (2.54cm). Ideally, you need a 5253-100-7-S and a 5253-100-7-R socket pair ...



Sockets on the board allow the laser assembly to be connected without soldering. All the necessary connections are grouped on the side of the board for easy connection to the EVM/OEM boards.



Mouser offers inventory, pricing, & datasheets for Laser Diode Socket IC & Component Sockets.



These laser diode sockets are ideal for OEM-type implementations and are compatible with our selection of Ø3.8 mm, Ø5.6 mm, Ø9 mm, and TO-5 laser diode packages. All of these sockets are ...



The LDM-4983T is designed for typical telecommunication 13-pin and 7-pin butterfly laser diode packages and includes a separate case temperature control for applications requiring tight ...



Buy Laser Diode Socket IC Sockets. Newark Electronics offers fast quotes, same day dispatch, fast delivery, wide inventory, datasheets & technical support.

## Contact Us

For more information, pricing, or custom network solutions, please contact us:

Website: <https://hashherbcafe.co.za>

Email: [hello@hashherbcafe.co.za](mailto:hello@hashherbcafe.co.za)

Phone: +27 63 814 7295

Address: 15 Galaxy Road, Linbro Business Park, Johannesburg, 2065, South Africa

This document is for informational purposes only. Specifications subject to change without notice.

