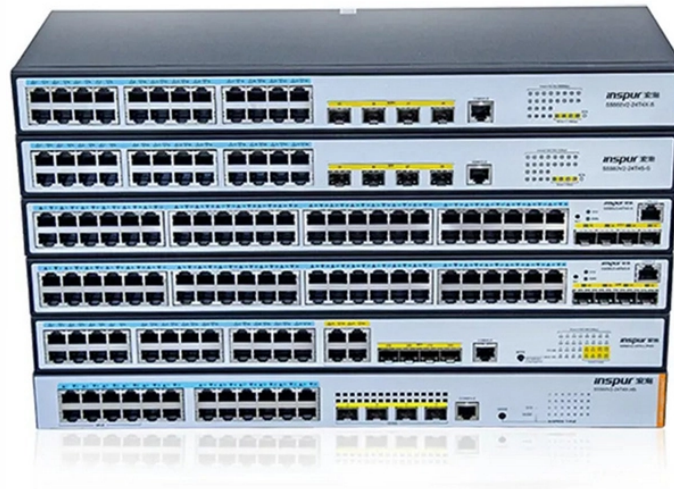


Basic Standard Configuration of Secondary Distribution Box



Basic Standard Configuration of Secondary Distribution Box



secondary unit substation is a close-coupled assembly consisting of enclosed primary high voltage equipment, three-phase power transformers, and enclosed secondary low-voltage ...



Typical equipment for this system arrangement is a single unit substation consisting of a fused primary switch, a transformer of sufficient size to supply the loads, and a low-voltage switchboard. This ...



Generally, the secondary distribution systems are designed in single phase for areas of residential customers and in three phase for areas of industrial or commercial customers with high-load densities.



The purpose of the advisory notice [PDF, 232 KB] is to draw the attention of developers and owners of multiple occupancy buildings, and their electrical consultants and contractors to the ...



The first option for Single Family Dwellings is a service box with stakes to be installed as per Appendix D, Drawing D.5.1 Service boxes must be installed on the non-driveway side of the lot.



This guide is intended to present the fundamentals of power system design for commercial and industrial power systems. It is not designed as a substitute for educational. The ...



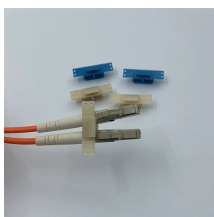
Utilities may have some control over and access to the energy stored in electric vehicles attached to the grid.



This configuration connects two or more transformers (fed from at least two feeders) in parallel to energize the secondary bus. To prevent reverse power flow through the transformers, ...



The a.c. distribution system is classified into (i) primary distribution system and (ii) secondary distribution system.



TITLE BLOCKS ARE USED TO HOLD INFORMATION ABOUT THE BOOK, SECTION, AND STANDARD AND ARE LOCATED AT THE BOTTOM OF THE PAGE. "APPROVAL" REFERS TO ...

Contact Us

For more information, pricing, or custom network solutions, please contact us:

Website: <https://hashherbcafe.co.za>

Email: hello@hashherbcafe.co.za

Phone: +27 63 814 7295

Address: 15 Galaxy Road, Linbro Business Park, Johannesburg, 2065, South Africa

This document is for informational purposes only. Specifications subject to change without notice.

