

Base station equipment optical modules



Base station equipment optical modules



The SFP/SFP+ industrial grade mobile fronthaul optical modules developed by NADDOD for 4G and 5G wireless communication base station application scenarios can meet the industrial grade long time ...



Conclusion Optical chips and optical modules are indispensable components in base station optical communication systems. Optical chips provide the core high-speed optical signal ...



The transmission carriers connecting the BBU and RRU devices are optical modules and optical fibers. In 2/3/4G networks, it is generally sufficient to use 10Gbps optical modules for CPRI interfaces.



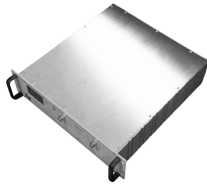
Which optical modules are commonly used in 4G base stations? In this blog, ETU-LINK will talk about 4G base stations and common types of optical modules. The base station can be divided into two ...



Looking ahead to 2026, the market is expected to witness a shift towards more integrated and compact optical modules that support higher data throughput and improved thermal management.



Telecom operators are rapidly deploying 5G infrastructure, which requires advanced optical modules to connect base stations and ensure seamless data transmission.



Discover comprehensive analysis on the Base Station Optical Module Market, expected to grow from USD 1.2 billion in 2024 to USD 2.5 billion by 2033 at a CAGR of 8.7%. Uncover critical growth ...



The Base Station Optical Module market is booming, driven by 5G expansion and cloud adoption. This in-depth analysis reveals market size, growth trends, key players (II-VI, Lumentum, ...

Contact Us

For more information, pricing, or custom network solutions, please contact us:

Website: <https://hashherbcafe.co.za>

Email: hello@hashherbcafe.co.za

Phone: +27 63 814 7295

Address: 15 Galaxy Road, Linbro Business Park, Johannesburg, 2065, South Africa

This document is for informational purposes only. Specifications subject to change without notice.

