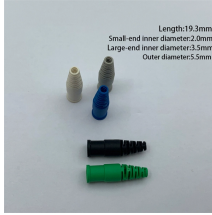


Bahrain QSFP-DD Optical Module PAM4



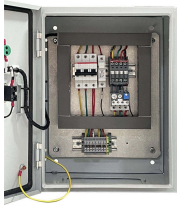
Bahrain QSFP-DD Optical Module PAM4



Supported by PAM4 modulation, it is a more cost-effective solution for 400G DCI with ultra-low power consumption. And it provides more flexibility and scalability since it has more lanes (8 or 4 lanes) ...



Complete guide to 400G QSFP-DD transceiver types, PAM4 encoding, wavelengths, and specifications. Compare SR8, DR4, FR4, LR4, LR8, ER4 modules.



400G XDR4 QSFP-DD Product Features Compliant with IEEE 802.3bs and QSFP-DD MSA Four parallel 1310nm optical lanes 8*53.125Gbps (PAM4) electrical interface (400GAUI-8), 4*106.25Gbps ...



The 4x 100G QSFP-DD FR1 optical transceiver that provides 4 parallel 100GE links over 4 single mode fiber (SMF) pairs via its MPO-12 connector. Each fiber pair link is compliant to 100GBASE-FR1 and ...



A deep dive into QSFP-DD module PCB testing challenges, covering PAM4 signal integrity, PDN power testing, thermal management, and protocol compliance for 400G/800G data center optical modules.



It has been designed to meet the harshest external operating conditions including temperature, humidity and EMI interference. The module offers very high functionality and feature integration, accessible ...



The Active Optical Cable assemblies support 400G PAM4 applications and are available in standard lengths up to 100 meters including 1:2, 1:4 and 1:8 breakouts.



QSFP-DD Interconnect System's 8-lane electrical interface transmits 28G NRZ, 56G PAM-4 and 112G PAM-4, up to 200, 400 or 800 Gbps aggregate. Backwards compatible with QSFP.



Cisco offers a comprehensive portfolio of QSFP-DD modules across copper, multimode fiber, and single-mode fiber, optimized for a broad range of applications and distances, leveraging NRZ, PAM4, and ...



Generic Compatible 400GBASE-DR4 SiPh QSFP-DD PAM4 1310nm 500m DDM MPO-12/APC SMF Silicon Photonics Baed Optical Transceiver Module
Generic 400G / Generic / 500m / MPO-12/APC / ...



The optical transceiver supports a full QSFP-DD-compliant set of control, alarm, and monitoring features through a standard I2C management interface, as well as low speed control pins which support ...

Contact Us

For more information, pricing, or custom network solutions, please contact us:

Website: <https://hashherbcafe.co.za>

Email: hello@hashherbcafe.co.za

Phone: +27 63 814 7295

Address: 15 Galaxy Road, Linbro Business Park, Johannesburg, 2065, South Africa

This document is for informational purposes only. Specifications subject to change without notice.

