

BXMD52 Explosion-proof Distribution Box



BXMD52 Explosion-proof Distribution Box



- Certified explosion-proof mark Ex d IIB T6 Gb, compliant with IECEx and ATEX standards.
- Customizable sizes, materials, and internal components to meet specific project requirements.
- ...



Stainless steel exposed fasteners, anti-drip structure, convenient for installation and maintenance. Cable entries are sealed with stopping plug, the cable glands shall be supplied by users (Refer to P ...



Its products cover explosion-proof distribution boxes, LED explosion-proof lamps, explosion-proof instrument control boxes, etc., and are widely used in petroleum, chemical, power, metallurgy and ...



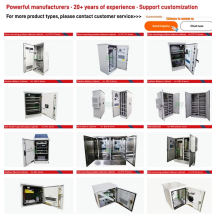
racket. For outdoor use, rainproof cover or protective cabinet can be added. The material can be customized according to user requirements; Steel pipe or cable wiring is acc.



The Explosion-proof Distribution Box helps protect power systems in hazardous areas with flammable gases or dust. These conditions raise explosion risks and can threaten workplace safety, equipment, ...



BXM (D)51-2 outdoor wall-mounted explosion-proof lighting (power) distribution box is compound type, switch box adopts flameproof structure, bus box and outlet box adopts increased safety structure, ...



·Enclosure for modular combination (Ex d & Ex e).
 ·Main switch and branch switch are operated with external rotary actuator. Internal wiring to the terminal is finished.
 · International brand of explosion ...



Ideal for marine platforms, chemical tankers, LNG vessels, and dangerous cargo wharfs, these robust distribution boxes ensure reliable performance under challenging conditions, including moisture, ...



Explosion proof Lighting Distribution Box, products shock-resistant and durable, energy-saving and environmentally friendly, models and styles are complete, direct sales, international certification, ...



Home >> Products >> Explosion Proof Electric Apparatus >> BM (D)X52-S Series Explosion-proof Distribution Boxes

Contact Us

For more information, pricing, or custom network solutions, please contact us:

Website: <https://hashherbcafe.co.za>

Email: hello@hashherbcafe.co.za

Phone: +27 63 814 7295

Address: 15 Galaxy Road, Linbro Business Park, Johannesburg, 2065, South Africa

This document is for informational purposes only. Specifications subject to change without notice.

