

## Armored Fiber Optic Patch Cord FC-ST



## Armored Fiber Optic Patch Cord FC-ST



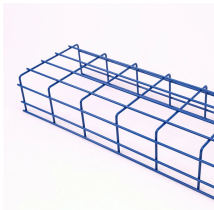
The armored fiber patch cable with built-in metal armor can resist mechanical damage from crushing, abrasion, cutting, and pulling in the most hazardous areas. It can protect fibers and prevent network ...



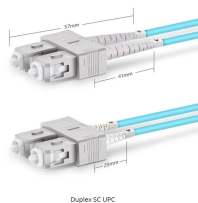
We are a Indoor / Outdoor Armored Anti-Rodent patch cord LC/SC/FC/ST Duplex Single mode Fiber Optic Cable Patch Cord Manufacturer. We supply fiber optic patch cord cables in competitive cost ...



Customized Armored 4-144 Fibers  
LC/SC/FC/ST/LSH (E2000) Singlemode & Multimode  
Breakout Fiber Optic Patch Cord PVC/LSZH/OFNP  
Flame-retardant Jacket with Tight-buffered Coating  
on Each ...



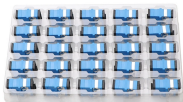
Ruggedized design armored fiber optic patchcord with stainless steel tube inside the outer cable jacket. Make according to customer specified length and fiber mode, available for all connector choices ...



Armored fiber optic patch cables are designed with a protective steel or aluminum layer to provide enhanced durability and resistance against crushing, bending, and rodent damage. Available in ...



American Tech stocks and guarantees one of the most complete off the shelf stock fiber optic jumper inventories in the USA including singlemode patch cables and multimode patch cords in both ...



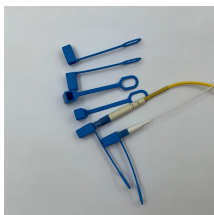
Looking for a solution for harsh environments where traditional standard fiber optic patch leads cannot withstand the conditions? Look no further than our armoured optical patch cords.



Fiber Optic Patch Cables Buy Amphenol Fiber Optic Patch Cables Factory-Direct from Cables on Demand! With 4 decades of fiber optic interconnect manufacturing experience, our optical assembly ...



Armored OS2 SingleMode Simplex LC/SC/FC/ST 3.0mm Fiber Optic Patch Cables are built with a protective armored layer that enhances durability, making them ideal for harsh environments where ...



Our high-quality armored patchcords are available with various connector types, including SC, LC, FC, ST, E2000, and MTRJ, combining durability and reliability to meet your connectivity needs effectively.

## Contact Us

For more information, pricing, or custom network solutions, please contact us:

Website: <https://hashherbcafe.co.za>

Email: [hello@hashherbcafe.co.za](mailto:hello@hashherbcafe.co.za)

Phone: +27 63 814 7295

Address: 15 Galaxy Road, Linbro Business Park, Johannesburg, 2065, South Africa

This document is for informational purposes only. Specifications subject to change without notice.

