

# Applying quota for tying pigtails



## Overview

Apply online at [GoOutdoorsFlorida.com](http://GoOutdoorsFlorida.com) by logging into your customer account and choosing Apply for Limited Entry/Quota Permits, or complete and present this form to a license agent or tax collector's office to submit on your behalf. What are the Different Types of Import Quotas Administered by CBP?

What is the role of CBP in administering import quotas?

Can CBP implement or make changes to quota restrictions?

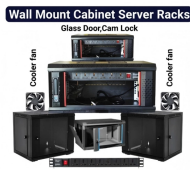
What factors determine whether goods are subject to quota restrictions/restraint limits in order to receive. The IBEW pushes that so called pig tails (wire nuts splicing wires together with one left out for use) are required on every wire at every receptacle. Our NEC instructor told us it is code, but I can not find it in code. The max my wire nuts can take in 14ga is 6 wires, and I have not been able to get a hold of any that can splice 7 wires. How can I solve this?

Can I make 2 sets of splices. The bedroom is on the main floor of a 1-story house, with an unfinished attic and an unfinished basement. The NM cable for that circuit already. Does NEC 300. 14 apply to pig tails?

The minimum length of conductors, including grounding conductors, at all boxes shall be 6". Does this apply to pig tails when chaining receptacles?

54" (9x 6") seems like a lot of wire to get in the. In this article, we will explore the step-by-step process of creating perfect pigtails, the tools you'll need, styling tips, and how to incorporate different variations into your pigtail hairstyle.

## Applying quota for tying pigtails



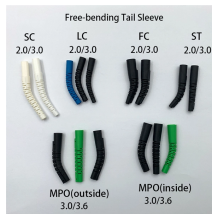
If you splice all your leads and don't leave a pig tail on them, you can put the pig tails on the recepticals on the bench then just plug them in at the box on trim out.



In this article, we will explore the step-by-step process of creating perfect pigtails, the tools you'll need, styling tips, and how to incorporate different variations into your pigtail hairstyle.



Apply online at GoOutdoorsFlorida by logging into your customer account and choosing Apply for Limited Entry/Quota Permits, or complete and present this form to a license agent or tax collector's ...



What does the term "in proper form" mean for quota reporting purposes and why is this important? What happens when an entry summary is not submitted in proper form?



If pigtails do NOT have a required length, is there a best practice or accepted standard? I was thinking 4" seemed about right. As for box fill calculations: I have an outdoor receptacle (TR, ...



Durston and some other tents provide short elastic cord “pigtailed” along the top seam where door mesh meets solid fabric. Intended function seems to be a lightweight, easily untied ...



Tie into the cable in what is currently the last receptacle (daisy-chain), and then run the new cable back down into the basement (and then over and up to the new receptacle)?



The "official" way to apply a wire nut is to start with straight, untwisted wire, stripped to the specified length. The wire nut is twisted on by hand, as tight as you can get it. Then, using ...



quick tutorial I hope you all enjoy and learned something useful



As long as you use at least six inches of wire, ensure the pigtail matches up to your circuit wire's gauge and insulation color, and you have ensured the power is switched off before starting ...

## Contact Us

For more information, pricing, or custom network solutions, please contact us:

Website: <https://hashherbcafe.co.za>

Email: [hello@hashherbcafe.co.za](mailto:hello@hashherbcafe.co.za)

Phone: +27 63 814 7295

Address: 15 Galaxy Road, Linbro Business Park, Johannesburg, 2065, South Africa

This document is for informational purposes only. Specifications subject to change without notice.

