


Analysis of the Characteristics of Fireproof Cable Trays in Sri Lanka





Overview


Fire Resistance Testing of Cable Trays ensures they don't fuel fires or emit toxic smoke. Learn key standards, testing methods, and safety tips. This includes checking their flammability, smoke production, toxic gas emissions, and ability to block heat and fire. Why Does. Cable tray and Ladder systems are versatile cable management solutions used to support and route cables in various environments. They offer easy access for cable installation and. Throughout the nation, Gaurav Electromech is a well-known brand for providing strong and efficient cable tray solutions. Being a well-known cable tray manufacturer in Sri Lanka, we focus on creating sturdy trays that offer orderly and secure support for electrical wire systems in commercial. Effective protection of cable systems around the world: our tried-and-tested FLAMMOTECT-A and DG-CR 0. 7 products are successfully used to protect cables in high-rise buildings, industrial buildings, and offshore facilities as well as in sensitive areas, such as hospitals, airports, production. From 2003 to 2004, he was a Research Assistant at the Department of Architecture, City University of Hong Kong, and from 2005 to 2010, he was an Associate Professor at the School of Civil Engineering, Central South University.


Analysis of the Characteristics of Fireproof Cable Trays in Sri Lanka

	<p>The flame morphology, temperature distribution, and fire spread rate during the cable combustion process were analyzed for experimental scenarios ...</p>
---	--

	<p>Being a well-known cable tray manufacturer in Sri Lanka, we focus on creating sturdy trays that offer orderly and secure support for electrical wire systems in commercial, residential, and industrial settings.</p>
---	--

	<p>The flame morphology, temperature distribution, and fire spread rate during the cable combustion process were analyzed for experimental scenarios for which the cable laying angles and ...</p>
--	--

	<p>The mostly combustible cable sheaths and insulation allow a fire to spread along the cable at rapid speed. Our tested solutions for cable fire protection can delay the spread of fire in order to minimise ...</p>
---	--

	<p>Our team of experts incorporates the latest advancements in cable tray design to provide optimal cable support, heat dissipation, and ease of installation. All our electrical cable trays comply with the ...</p>
---	---



These trays and ladders offer excellent mechanical strength, ensuring long-term performance in harsh environments, making them ideal for power distribution and cable routing applications.



We provide a variety of cable trays and accessories, including electro galvanized, hot dip galvanized, steel, aluzinc, and aluminum alloy options. Browse Eastlink's full range of cable trays - engineered ...



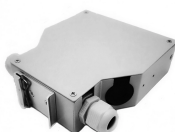
Fire Resistance Testing of Cable Trays ensures they don't fuel fires or emit toxic smoke. Learn key standards, testing methods, and safety tips.



Utility tunnel cable systems face critical fire safety challenges due to dense cable arrangements and complex flame spread dynamics. This study investigates the suppression ...



Straight sections of solid bottom cable trays constructed from a single sheet of metal, providing excellent protection from external damage. They are used primarily for instrumental control, communication ...



If you're looking for Cable Trays in Sri Lanka, although based in Kolkata, we provide trays that work across diverse industries such as powerplants, telecom centers, and data hubs. Routing and ...

Contact Us

For more information, pricing, or custom network solutions, please contact us:

Website: <https://hashherbcafe.co.za>

Email: hello@hashherbcafe.co.za

Phone: +27 63 814 7295

Address: 15 Galaxy Road, Linbro Business Park, Johannesburg, 2065, South Africa

This document is for informational purposes only. Specifications subject to change without notice.

