

American Cable Mesh Trays



American Cable Mesh Trays



Over the past 55+ years, MP Husky US Cable Tray has engineered and manufactured the most reliable, highest quality, cost effective and innovative cable trays systems available.



These trays mount on walls, overhead, or under floors in whole-facility installations, and they're ideal for hiding cable in spaces without paneled ceilings. Wire mesh cable trays install as systems, with ...



Choose from our selection of wire mesh trays, including over 475 products in a wide range of styles and sizes. Same and Next Day Delivery.



Atkore's US Tray was established in 2012, as an American manufacturer of made-to-order cable trays that are built per NEMA standards and certified by UL. We offer modern, innovative, and technically ...



Explore sheet steel and wire mesh cable tray for robust cable management. Ideal for various environments, ensuring safety, efficiency, and durability.



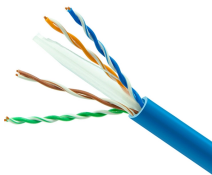
At Angola Wire, we specialize in providing a diverse range of building cable trays, available in various materials and finishes. With our extensive experience, we have demonstrated our ability to ...



Cable Tray and Cord Reels Precision engineered. Constructed from high-quality welded steel wire, Cablofil® Wire Mesh Cable Tray is the result of decades of research and over 94,000 miles of ...



Manufacturer of standard and custom roll formed cabletrays. Serves the agricultural, aerospace, antenna, electrical, HVAC, railroad, military, and telecommunications industries. Made in ...



Cable Tray, Connectivity - Cable Management, Wire Mesh Cable Tray (Part - BFR-P36X6-White) - White 36"W x 6"D x 10"L-P Wire Mesh Cable Tray - Lightweight & Versatile Cable Routing - White ...



Wire Mesh Cable Tray Systems Precision-Engineered USA-Made Solutions for Data Centers & Industrial Facilities Marlin Steel's wire mesh cable trays are designed for high-performance cable ...

Contact Us

For more information, pricing, or custom network solutions, please contact us:

Website: <https://hashherbcafe.co.za>

Email: hello@hashherbcafe.co.za

Phone: +27 63 814 7295

Address: 15 Galaxy Road, Linbro Business Park, Johannesburg, 2065, South Africa

This document is for informational purposes only. Specifications subject to change without notice.

