

# Aluminum Alloy S-Type Tower Splice Box for African Optical Cable Junction Boxes



## Aluminum Alloy S-Type Tower Splice Box for African Optical Cable J



ADSS/OPGW Metal Junction Boxes come in various models for both tower and pole applications. They're available with different port configurations and fiber capacities, ranging from 12 to 60 fibers. ...



Fibre optic metal joint box/joint closure/splice closure is used for the continuation of the optical cable in the middle of the tower, which has the advantages of high mechanical strength, good sealing ...



The metal joint box are applicable for connection protection of special optical cables, with the functions of direct and branch connection, with the maximum of 6 optical cables, which mainly for overhead rods ...



The metal joint box are applicable for connection protection of special optical cables, with the functions of direct and branch connection, with the maximum of 6 ...



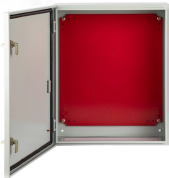
The metal optical cable splice closure is made of aluminum alloy with perfect seal. It features in high mechanical strength, good airtight and anti-corrosive. Having been sealed with sealing ring and ...



Furnished with four plugged cable ports (2 aluminum and 2 plastic) for either All-Dielectric Self-Supporting (ADSS) or Optical Ground Wire (OPGW) cables, the splice enclosure can be pre ...



The metal optical cable splice closure is made of aluminum alloy with perfect seal. ...



It is of high mechanical strength, good sealing, anti corrosion by the electrified alloy shell, with sealing of sealant ring and silica gel. It can be started, expanded, maintained and connected repeatedly, with ...



Shop our high-quality OPGW joint boxes for reliable fiber optic splicing. Durable metal and plastic designs for pole and tower mounts. Bulk orders welcome.



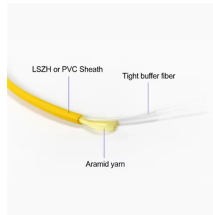
Fibre optic metal joint box/joint closure/splice closure is used for the continuation of the optical cable in the middle of the tower, which has the advantages of high ...



An assembling plate prepared with fixing devices for the cable and for the splice trays is placed inside the box. Cable glands and a heavy wall heat shrinkable tube are used for sealing the entries of the ...



This product is applicable to connection and protection of special power cable OPGW (Optical Fiber Composite Overhead Ground Wire) and ADSS (All Dielectric Self-Supporting Optical Fiber Cable), ...



The ADSS/OPGW metal junction box is also called a splicing box that is designed to house the fiber core splices to the outdoor intermediate optical cable leading to the patch panel in the control room.

## Contact Us

For more information, pricing, or custom network solutions, please contact us:

Website: <https://hashherbcafe.co.za>

Email: [hello@hashherbcafe.co.za](mailto:hello@hashherbcafe.co.za)

Phone: +27 63 814 7295

Address: 15 Galaxy Road, Linbro Business Park, Johannesburg, 2065, South Africa

This document is for informational purposes only. Specifications subject to change without notice.

